

## Certificate of Analysis

**Product Name:** Universal Protein Lysate - Human Normal Tissues

**Catalog No.:** NB820-89206

**Lot No.:** A811222

**Species:** ☒ Human ☐ Mouse ☐ Rat ☐ Monkey (Rh) ☐ Guinea Pig ☐ Porcine  
☐ Bovine ☐ Hamster ☐ Dog ☐ Monkey (Cy) ☐ Rabbit ☐ Plant

**Tissue Type:** ☒ Normal ☐ Adult ☐ Fetal ☐ Tumor ☐ Disease ☐ Cell Line

**Donor Information:**

Human Adult: Male: 24-82 year(s) old

Pool of 13 donor(s)

Female: 34-83 year(s) old

Pool of 8 donor(s)

Human Fetal: Male: 18-29 week(s) old

Pool of 3 donor(s)

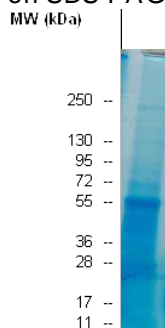
Female: 24-37 week(s) old

Pool of 3 donor(s)

**Clinical Diagnosis:** Normal

**Packaging:** 4x0.5 mg per vial; **Concentration:** 5 mg/ml.

**Quality Control:** Protein lysate is verified on SDS-PAGE comparing to standard protein lysate.



Protein lysate can be validated by Western Blot using specific biomarker: GAPDH for total protein, cytoplasmic and universal total protein; Histone for nuclear protein; Na/K ATPase for membrane protein; Vimentin for cytoskeleton protein.

**Use s:** Western Blot (10 µg per lane is recommended for a mini gel), Immunoprecipitation, Electrophoresis, Enzymatic activity analysis, protein-protein interaction, gel shift assay, tissue specific expression, and mass spec. analysis.

**Buffer:**

Location	Buffer Components*
Total protein	HEPES (pH7.9), KCl, Sucrose, Sodium deoxycholate, and NP-40
Membrane protein	The same as above.
Nuclear protein	HEPES (pH7.9), NaCl
Cytoplasmic protein	HEPES (pH7.9), KCl, and Sucrose.
Cytoskeleton protein	PIPES (pH 6.8), NaCl, SDS, and Sucrose

Note: \*Each buffer contains,  $\text{MgCl}_2$ , EDTA, Glycerol, and a cocktail of protease inhibitors

**Storage:** Store at 2-8°C for continuous use within a day. For extended storage, freeze working aliquots at -70°C. Repeated freezing and thawing is not recommended. Under proper storage conditions the shelf life is six months from the date of receipt.

**Shipping:** Dry Ice

**User's Note:** Products are intended for laboratory research purposes only and should be used by qualified personnel only.

APPROVED BY: 