



Prlr (Rat) ELISA Kit

Catalog Number KA1834

96 assays

Version: 02

Intended for research use only

www.abnova.com

Table of Contents

Introduction	3
Background	3
General Information	4
Materials Supplied	4
Storage Instruction	4
Materials Required but Not Supplied	4
Assay Protocol	5
Reagent Preparation	5
Assay Procedure	6
Data Analysis.....	7
Calculation of Results.....	7
Performance Characteristics	7
Resources.....	9
Troubleshooting.....	9
Plate Layout	10

Introduction

Background

The Prlr (Rat) ELISA Kit is an in vitro enzyme-linked immunosorbent assay for the quantitative measurement of rat Prolactin R in serum (rat Prolactin R concentration in normal serum/plasma is pretty low, it may not be detected in this assay), plasma and cell culture supernatants. This assay employs an antibody specific for rat Prolactin R coated on a 96-well plate. Standards and samples are pipetted into the wells and Prolactin R present in a sample is bound to the wells by the immobilized antibody. The wells are washed and biotinylated anti-rat Prolactin R antibody is added. After washing away unbound biotinylated antibody, HRP conjugated streptavidin is pipetted to the wells. The wells are again washed, a TMB substrate solution is added to the wells and color develops in proportion to the amount of Prolactin R bound. The Stop Solution changes the color from blue to yellow, and the intensity of the color is measured at 450 nm.

General Information

Materials Supplied

Component	Amount
Prolactin R Microplate (Item A): 96 wells coated with anti-Prolactin R	96 (8x12) wells
Wash Buffer Concentrate (20x) (Item B): 20x concentrated solution	25 ml
Standards (Item C): recombinant rat Prolactin R	2 vials
Assay Diluent D (Item K): 5x concentrated buffer. For Standard/Sample (serum/plasma samples/cell culture medium) diluent	15 ml
Assay Diluent B (Item E): 5x concentrated buffer. For detection antibody and HRP-Streptavidin diluent	15 ml
Detection Antibody Prolactin R (Item F): biotinylated anti-rat Prolactin R (each vial is enough to assay half microplate)	2 vials
HRP-Streptavidin concentrate (Item G): 400x concentrated HRP-conjugated streptavidin	200 μ l
TMB One-Step Substrate Reagent (Item H): 3,3',5,5'-tetramethylbenzidine (TMB) in buffered solution	12 ml
Stop Solution (Item I): 0.2 M sulfuric acid	8 ml

Storage Instruction

May be stored for up to 6 months at 2 to 8 °C from the date of shipment. Standard (recombinant protein) should be stored at -20 °C or -80 °C (recommended at -80 °C) after reconstitution. Opened Microplate Wells or reagents may be store for up to 1 month at 2 to 8 °C. Return unused wells to the pouch containing desiccant pack, reseal along entire edge.

Note: the kit can be used within one year if the whole kit is stored at -20 °C. Avoid repeated freeze-thaw cycles.

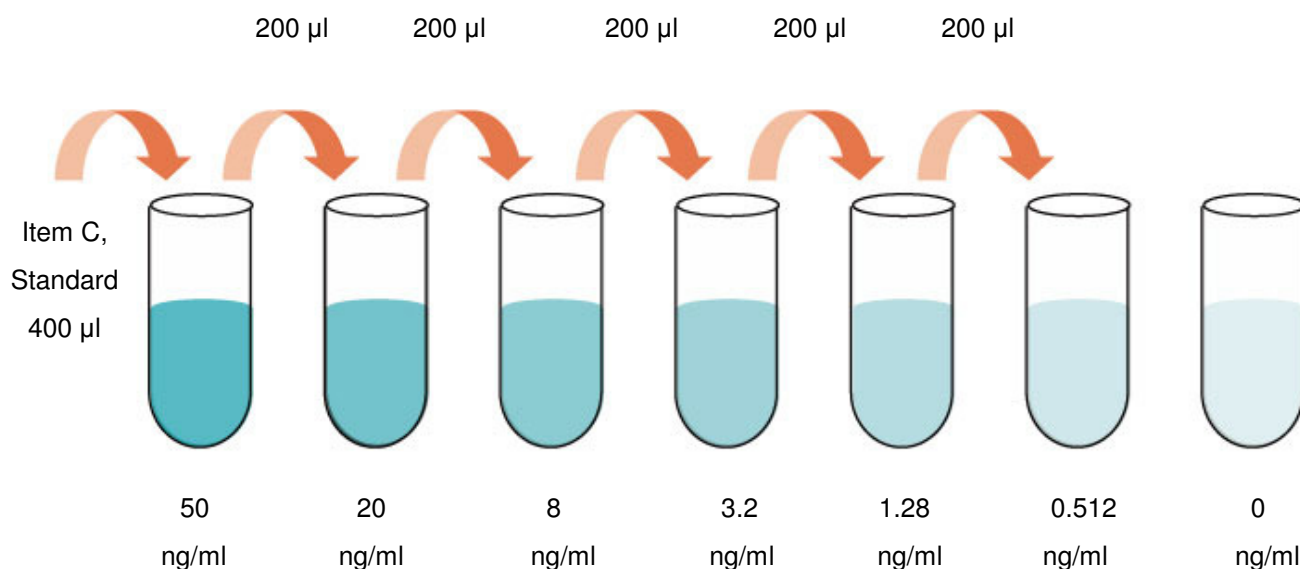
Materials Required but Not Supplied

- ✓ Microplate reader capable of measuring absorbance at 450 nm.
- ✓ Precision pipettes to deliver 2 μ l to 1 ml volumes.
- ✓ Adjustable 1-25 ml pipettes for reagent preparation.
- ✓ 100 ml and 1 liter graduated cylinders.
- ✓ Absorbent paper.
- ✓ Distilled or deionized water.
- ✓ Log-log graph paper or computer and software for ELISA data analysis.
- ✓ Tubes to prepare standard or sample dilutions.

Assay Protocol

Reagent Preparation

1. Bring all reagents and samples to room temperature (18 - 25 °C) before use.
2. Sample dilution: If your samples need to be diluted, 1x Assay Diluent D (Item K) is used for dilution of serum/plasma/culture supernatants.
Suggested dilution for normal serum/plasma: 2 fold*.
**Please note that levels of the target protein may vary between different specimens. Optimal dilution factors for each sample must be determined by the investigator*
3. Assay Diluent D (Item K) and Assay Diluent B (Item E) should be diluted 5-fold with deionized or distilled water before use.
4. Preparation of standard: Briefly spin the vial of Item C. Add 400 µl 1x Assay Diluent D (Item K) into Item C vial to prepare a 50 ng/ml standard solution. Dissolve the powder thoroughly by a gentle mix. Pipette 300µl 1x Assay Diluent D into each tube. Use the stock standard solution to produce a dilution series (shown below). Mix each tube thoroughly before the next transfer. Gently vortex to mix. 1x Assay Diluent D serves as the zero standard (0 ng/ml).



5. If the Wash Concentrate (20x) (Item B) contains visible crystals, warm to room temperature and mix gently until dissolved. Dilute 20 ml of Wash Buffer Concentrate into deionized or distilled water to yield 400 ml of 1x Wash Buffer.
6. Briefly spin the Detection Antibody vial (Item F) before use. Add 100 µl of 1x Assay Diluent B (Item E) into the vial to prepare a detection antibody concentrate. Pipette up and down to mix gently (the concentrate can be stored at 4 °C for 5 days). The detection antibody concentrate should be diluted 80-fold with 1x Assay Diluent B and used in step 4 of Assay Procedure.
7. Briefly spin the HRP-Streptavidin concentrate vial (Item G) and pipette up and down to mix gently before

use. HRP-Streptavidin concentrate should be diluted 400-fold with 1x Assay Diluent B (Item E).

For example: Briefly spin the vial (Item G) and pipette up and down to mix gently. Add 30 µl of HRP-Streptavidin concentrate into a tube with 12 ml 1x Assay Diluent B to prepare a 400-fold diluted HRP-Streptavidin solution (don't store the diluted solution for next day use). Mix well.

Assay Procedure

1. Bring all reagents and samples to room temperature (18 - 25°C) before use. It is recommended that all standards and samples be run at least in duplicate.
2. Add 100 µl of each standard (see Reagent Preparation step 2) and sample into appropriate wells. Cover well and incubate for 2.5 hours at room temperature or over night at 4°C with gentle shaking.
3. Discard the solution and wash 4 times with 1x Wash Solution. Wash by filling each well with Wash Buffer (300 µl) using a multi-channel Pipette or autowasher. Complete removal of liquid at each step is essential to good performance. After the last wash, remove any remaining Wash Buffer by aspirating or decanting. Invert the plate and blot it against clean paper towels.
4. Add 100 µl of 1x prepared biotinylated antibody (Reagent Preparation step 6) to each well. Incubate for 1 hour at room temperature with gentle shaking.
5. Discard the solution. Repeat the wash as in step 3.
6. Add 100 µl of prepared Streptavidin solution (see Reagent Preparation step 7) to each well. Incubate for 45 minutes at room temperature with gentle shaking.
7. Discard the solution. Repeat the wash as in step 3.
8. Add 100 µl of TMB One-Step Substrate Reagent (Item H) to each well. Incubate for 30 minutes at room temperature in the dark with gentle shaking.
9. Add 50 µl of Stop Solution (Item I) to each well. Read at 450 nm immediately.

Summary

1. Prepare all reagents, samples and standards as instructed.
2. Add 100 µl standard or sample to each well. Incubate 2.5 hours at room temperature or over night at 4°C.
3. Add 100 µl prepared biotin antibody to each well. Incubate 1 hour at room temperature.
4. Add 100 µl prepared Streptavidin solution. Incubate 45 minutes at room temperature.
5. Add 100 µl TMB One-Step Substrate Reagent to each well. Incubate 30 minutes at room temperature.
6. Add 50 µl Stop Solution to each well. Read at 450 nm immediately.

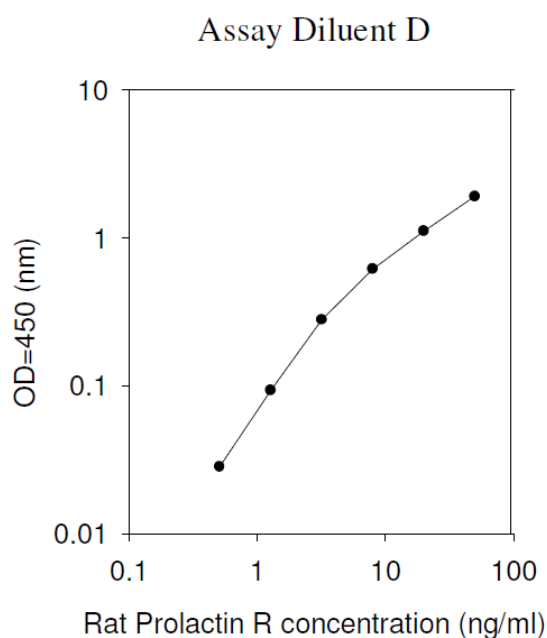
Data Analysis

Calculation of Results

Calculate the mean absorbance for each set of duplicate standards, controls and samples, and subtract the average zero standard optical density. Plot the standard curve on log-log graph paper or using Sigma plot software, with standard concentration on the x-axis and absorbance on the y-axis. Draw the best-fit straight line through the standard points.

Typical Data

These standard curves are for demonstration only. A standard curve must be run with each assay.



Performance Characteristics

- Sensitivity

The minimum detectable dose of Prolactin R is typically less than 0.4 ng/ml.

- Recovery

Recovery was determined by spiking various levels of Prolactin R into normal Rat serum, plasma and cell culture media. Mean recoveries are as follows:

Sample Type	Average % Recovery	Range (%)
Serum	132.6	122-144
Plasma	126.3	117-142
Cell culture media	125.4	117-141

- Linearity

Sample Type		Serum	Plasma	Cell culture media
1:2	Average % of	132.7	133.1	121.3
	Expected Range (%)	122-142	123-143	113-129
1:4	Average % of	131.4	91.59	77.10
	Expected Range (%)	121-142	78-101	68-88

- Reproducibility

✓ Intra-Assay: CV<10%

✓ Inter-Assay: CV<12%

- Specificity

Cross Reactivity: This ELISA kit shows no cross-reactivity with the following cytokines tested: rat CINC-2, CINC-3, CNTF, Fractalkine, IL-1 α , IL-1 β , IL-4, IL-6, IL-10, GM-CSF, IFN- γ , Leptin, Lix, MCP-1, MIP-3 α , β -NGF, TIMP-1, TNF- α .

Resources

Troubleshooting

Problem	Cause	Solution
Poor standard curve	Inaccurate pipetting	Check pipettes
	Improper standard dilution	Ensure briefly spin the vial of Item C and dissolve the powder thoroughly by a gentle mix.
Low signal	Too brief incubation times	Ensure sufficient incubation time; assay procedure step 2 change to over night
	Inadequate reagent volumes or improper dilution	Check pipettes and ensure correct preparation
Large CV	Inaccurate pipetting	Check pipettes
High background	Plate is insufficiently washed	Review the manual for proper wash. If using a plate washer, check that all ports are unobstructed.
	Contaminated wash buffer	Make fresh wash buffer
Low sensitivity	Improper storage of the ELISA kit	Store your standard at -20°C after reconstitution, others at 4°C . Keep substrate solution protected from light
	Stop solution	Stop solution should be added to each well before measure

Plate Layout

12								
11								
10								
9								
8								
7								
6								
5								
4								
3								
2								
1								
	A	B	C	D	E	F	G	H