



# KLH IgG1 (Monkey) ELISA Kit

Catalog Number KA2440

96 assays

Version: 05

Intended for research use only

[www.abnova.com](http://www.abnova.com)

## Table of Contents

|   |          |
|---|----------|
| <b>Introduction .....</b>                 | <b>3</b> |
| Intended Use .....                        | 3        |
| Background .....                          | 3        |
| Principle of the Assay .....              | 3        |
| <b>General Information .....</b>          | <b>4</b> |
| Materials Supplied .....                  | 4        |
| Storage Instruction .....                 | 4        |
| Materials Required but Not Supplied ..... | 4        |
| Precautions for Use .....                 | 5        |
| <b>Assay Protocol .....</b>               | <b>6</b> |
| Reagent Preparation .....                 | 6        |
| Sample Preparation .....                  | 6        |
| Assay Procedure .....                     | 7        |
| <b>Data Analysis .....</b>                | <b>8</b> |
| Calculation of Results .....              | 8        |
| <b>Resources .....</b>                    | <b>9</b> |
| Reference .....                           | 9        |
| Plate Layout .....                        | 10       |

## **Introduction**

### **Intended Use**

This test kit allows rapid and quantitative measurement of anti-KLH IgG1 levels in serum or plasma. IgG1 is the major IgG subclass in monkeys.<sup>2,3</sup>

### **Background**

Drug candidates are routinely screened for evidence of immune system regulation during the discovery process. It is important that the immune response is not enhanced or diminished since such effects may lead to hypersensitivity or increased susceptibility to infection. Determination of a drug candidate's effects on anti-KLH (keyhole limpet hemocyanin) antibody levels allows easy assessment of immune system regulation.<sup>1</sup> Animals are immunized with KLH while undergoing drug treatment, and serum is collected at appropriate times post immunization. Typically, serum collected 5-7 days after immunization is used for measurement of anti-KLH IgM levels, and serum collected 14+ days post immunization is used to measure anti-KLH IgG levels. Comparison of anti-KLH IgG or IgM levels in drug treated versus control groups reveals effects of the drug on the immune response.

### **Principle of the Assay**

The KLH IgG1 (Monkey) ELISA Kit is a solid phase enzyme-linked immunosorbent assay (ELISA). It uses KLH for solid phase (microtiter wells) immobilization and a horseradish peroxidase (HRP) conjugated mouse monoclonal anti-monkey IgG1 antibody for detection.\* Serum or plasma samples are diluted and incubated in the microtiter wells for 45 minutes. The microtiter wells are subsequently washed, and HRP conjugate is added and incubated for 45 minutes. Anti-KLH IgG1 molecules are thus sandwiched between immobilized KLH and the detection antibody conjugate. The wells are then washed to remove unbound HRP-labeled antibodies, and TMB Reagent is added and incubated for 20 minutes at room temperature. This results in the development of a blue color. Color development is stopped by the addition of Stop Solution, changing the color to yellow. Optical density is measured spectrophotometrically at 450 nm. The concentration of anti-KLH IgG1 is proportional to the optical density.

*\*: Specificity of the monoclonal antibody was determined in competitive ELISAs using recombinant monkey IgG1, IgG2, IgG3 and IgG4 as reference materials. All reference IgG's were kindly provided by the NIH Nonhuman Primate Reagent Resource center.*

## General Information

### Materials Supplied

List of component

| Component                         | Amount  |
|-----------------------------------|---|
| KLH Coated 96-well Plate          | 96 wells (12 strips of 8 wells)   |
| Anti-Monkey IgG1 HRP Conjugate    | 11 mL   |
| Anti-KLH IgG1 Stock (lyophilized) | The reference standard provided with the kit was calibrated using affinity purified rhesus monkey anti-KLH IgG. |
| 20x Wash Solution                 | 50 mL   |
| Diluent                           | 50 mL   |
| TMB Reagent (One-Step)            | 11 mL   |
| Stop Solution (1 N HCl)           | 11 mL   |

### Storage Instruction

On receipt, the anti-KLH IgG1 standard stock should be stored frozen at -20°C or lower. The remainder of the kit should be stored at 4°C, and the microtiter plate should be kept in a sealed bag with desiccant to minimize exposure to damp air. Do not freeze the HRP conjugate or TMB solutions. Test kits will remain stable for six months from the date of purchase provided that the components are stored as described.

### Materials Required but Not Supplied

- ✓ Precision pipettes and tips
- ✓ Distilled or deionized water
- ✓ Polypropylene or glass tubes
- ✓ Vortex mixer
- ✓ Absorbent paper or paper towels
- ✓ Micro-plate incubator/shaker mixing speed of ~150 rpm
- ✓ Plate washer
- ✓ Plate reader with an optical density range of 0-4 at 450 nm
- ✓ Graph paper (PC graphing software is optional)

**Precautions for Use**

- ✓ For Research Use Only. Not for Diagnostic Purposes.
- ✓ Please read the instructions thoroughly before using the kit.
- ✓ All reagents should be allowed to reach room temperature (25°C) before use.
- ✓ The optimal sample dilution should be determined empirically. Do not use dilutions less than 100-fold (i.e., do not use dilutions of 50-fold).
- ✓ Optimal results are achieved if, at each step, reagents are pipetted into the wells of the microtiter plate within 5 minutes

## Assay Protocol

### Reagent Preparation

✓ Wash solution Preparation

The wash solution is provided as a 20x stock. Prior to use dilute the contents of the bottle (50 mL) with 950 mL of distilled or deionized water.

✓ Standard Preparation

1. Working 30 - 0.94 ng/mL anti-KLH IgG1 standards should be used within 1 hour of preparation.
2. The anti-KLH IgG1 stock is provided in lyophilized form. Reconstitute as directed on the vial label (the reconstituted standard should be aliquoted and frozen at -20°C after reconstitution if additional use is intended).
3. Label 6 polypropylene or glass tubes as 30, 15, 7.5, 3.75, 1.88 and 0.94 ng/mL.
4. Into the tube labeled 30 ng/mL, pipette the volume of diluent detailed on the stock vial label. Then add the indicated volume of anti-KLH IgG1 stock (also detailed on the vial label) and mix gently. This provides the 30 ng/mL standard.
5. Dispense 250 µL of diluent into the tubes labeled 15, 7.5, 3.75, 1.88 and 0.94 ng/mL.
6. Prepare a 15 ng/mL standard by diluting and mixing 250 µL of the 30 ng/mL standard with 250 µL of diluent in the tube labeled 30 ng/mL.
7. Similarly prepare the 7.5, 3.75, 1.88 and 0.94 ng/mL standards by serial dilution.

### Sample Preparation

The optimal sample dilution should be determined empirically. However, we suggest that a 500-fold dilution is a reasonable starting point. In order to achieve high dilutions we suggest that a serial dilution strategy be used. If, for example, a 500-fold sample dilution is desired the following procedure should be used. This approach minimizes diluent usage and favors accurate and precise sample dilution.

1. Dispense 48 µL and 237.5 µL of diluent into separate tubes.
2. Pipette and mix 2 µL of the serum/plasma sample into the tube containing 48 µL of diluent. This provides a 25 fold diluted sample.
3. Mix 12.5 µL of the 25 fold diluted sample with the 237.5 µL of diluent in the second tube. This provides a 500 fold dilution of the sample.
4. Repeat this procedure for each sample to be tested.

Do not use dilutions less than 100-fold (i.e., do not use dilutions of 50-fold).

**Assay Procedure**

1. Secure the desired number of coated wells in the holder.
2. Dispense 100  $\mu$ L of standards and diluted samples into the wells (we recommend that samples be tested in duplicate).
3. Incubate on an orbital micro-plate shaker at 100-150 rpm at room temperature (25°C) for 45 minutes.
4. Aspirate the contents of the microtiter wells and wash the wells 5 times with 1x wash solution using a plate washer (400  $\mu$ L/well). The entire wash procedure should be performed as quickly as possible.
5. Strike the wells sharply onto absorbent paper or paper towels to remove all residual wash buffer.
6. Add 100  $\mu$ L of HRP conjugate into each well.
7. Incubate on an orbital micro-plate shaker at 100-150 rpm at room temperature (25°C) for 45 minutes.
8. Wash as detailed in 4 to 5 above.
9. Dispense 100  $\mu$ L of TMB Reagent into each well.
10. Gently mix on an orbital micro-plate shaker at 100-150 rpm at room temperature (25°C) for 20 minutes.
11. Stop the reaction by adding 100  $\mu$ L of Stop Solution to each well.
12. Gently mix. It is important to make sure that all the blue color changes to yellow.
13. Read the optical density at 450 nm with a microtiter plate reader within 5 minutes.

## Data Analysis

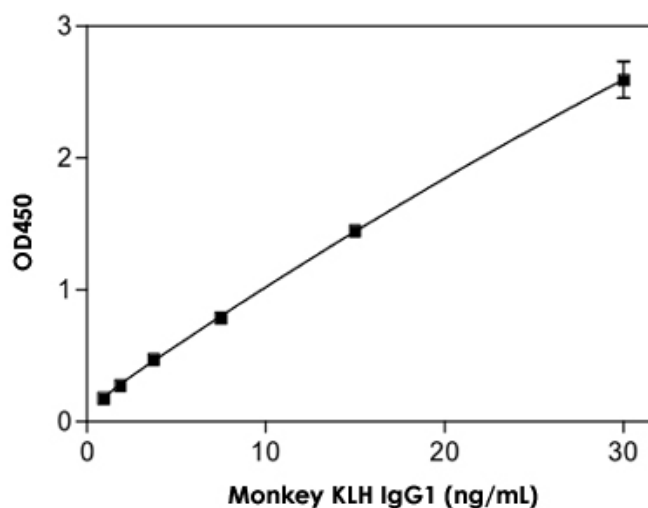
### Calculation of Results

1. Calculate the average absorbance values ( $A_{450}$ ) for each set of reference standards and samples.
2. Construct a standard curve by plotting the mean absorbance obtained for each reference standard against its concentration in ng/mL on linear graph paper, with absorbance on the vertical or Y-axis and concentrations on the horizontal or X-axis.
3. Using the mean absorbance for each sample, determine the corresponding concentration of anti-KLH IgG1 in ng/mL from the standard curve.
4. Multiply the derived concentration by the dilution factor to determine the actual concentration of anti-KLH IgG1 in the serum/plasma sample.
5. PC graphing software may be used for the above steps.
6. If the  $OD_{450}$  values of samples fall outside the standard curve, samples should be diluted appropriately and re-tested.

#### ✓ Typical Standard Curve

A typical standard curve with optical density readings at 450 nm on the Y-axis against anti-KLH IgG1 concentrations on the X-axis is shown below. This curve is for the purpose of illustration only and should not be used to calculate unknowns. Each user should obtain his or her data and standard curve in each experiment.

| Anti-KLH IgG1 (ng/mL) | $A_{450}$ |
|-----------------------|-----------|
| 30                    | 2.729     |
| 15                    | 1.448     |
| 7.5                   | 0.783     |
| 3.75                  | 0.447     |
| 1.88                  | 0.275     |
| 0.94                  | 0.177     |





## Resources

### Reference

1. JR Picotti *et.al.* T-cell-dependent antibody response: Assay development in cynomolgus monkeys. *Journal of Immunotoxicology*, 2:191-196 (2005)
2. ED Williamson *et.al.* Immunogenicity of recombinant protective antigen and efficacy against aerosol challenge with anthrax. *Infection and Immunity* 73:5978-5987 (2005)
3. P Procell-Wilkins *et.al.* Isotypic analysis of humoral immune responses in rhesus monkeys to an adult microsomal antigen of *Schistosoma Mansoni*: an indicator of successful treatment. *Am. J. Trop. Med. Hyg.* 45:629-635 (1991)

**Plate Layout**

|    |   |   |   |   |   |   |   |   |
|----|---|---|---|---|---|---|---|---|
| 12 |   |   |   |   |   |   |   |   |
| 11 |   |   |   |   |   |   |   |   |
| 10 |   |   |   |   |   |   |   |   |
| 9  |   |   |   |   |   |   |   |   |
| 8  |   |   |   |   |   |   |   |   |
| 7  |   |   |   |   |   |   |   |   |
| 6  |   |   |   |   |   |   |   |   |
| 5  |   |   |   |   |   |   |   |   |
| 4  |   |   |   |   |   |   |   |   |
| 3  |   |   |   |   |   |   |   |   |
| 2  |   |   |   |   |   |   |   |   |
| 1  |   |   |   |   |   |   |   |   |
|    | A | B | C | D | E | F | G | H |

