

INTENDED USE

The MagCollect Mouse NK Cell Isolation Kit is designed to isolate natural killer cells via a negative selection principle. The resulting cell preparation is highly enriched with NK cells. The purity of recovered cells ranges from 70-80%.

BACKGROUND

R&D Systems MagCollect products are designed for the isolation of cells in a "liquid phase". MagCollect technology is based on the use of ferrofluids or magnetic nanoparticles that have no magnetic memory (superparamagnetic) and behave like colloidal particles. This feature allows the ferrofluids to remain in solution without the need for mixing and additionally allows for efficient diffusion kinetics during the binding reaction. The proprietary manufacturing technology of MagCollect Ferrofluids generates particles with higher ligand binding capacity per mass compared to many other larger diameter magnetic particles.

PRINCIPLE OF SELECTION

A mononuclear cell suspension is first incubated with the Mouse NK Cell Biotinylated Antibody Cocktail which targets unwanted cells. Streptavidin Ferrofluid is added to the reaction which allows the streptavidin-coated nanoparticles to interact with the biotinylated antibody tagged cells. The tube containing the cell suspension is then placed within a magnetic field. Magnetically tagged cells will migrate toward the magnet (unwanted cell fraction), leaving the untagged cells or desired cell population in suspension. This population of cells can then be harvested by aspiration while the tube remains in the magnetic field. The enriched cell preparation can be used for a variety of applications including tissue culture, immune status monitoring, and flow cytometry.

MATERIALS PROVIDED & STORAGE CONDITIONS

Store the unopened kit at 2-8 °C. Do not use past kit expiration date. **DO NOT FREEZE.**

The kit contains sufficient reagents to process 1x10⁹ total cells.

PART	PART #	DESCRIPTION	STORAGE OF OPENED/DILUTED MATERIAL
Mouse NK Cell Biotinylated Antibody Cocktail	860123	1.0 mL of biotinylated antibody cocktail in a phosphate buffered solution containing BSA and preservative.	May be stored 2-8 °C when handled aseptically.*
Streptavidin Ferrofluid	860165	3.0 mL of streptavidin-coated nanoparticles in a solution containing BSA and preservative.	
Plus Buffer (10X)	860131	10 mL of a 10-fold concentrated buffer.	

* Provided this is within the expiration date of the kit.

OTHER SUPPLIES REQUIRED

- MagCollect Magnet (R&D Systems, Catalog # MAG997)
- Mouse Erythrocyte Lysing Kit (R&D Systems, Catalog # WL2000)
- 12 x 75 mm (5 mL) or 17 x 100 mm (15 mL) polystyrene round bottom tubes
- Sterile Pasteur pipettes or transfer pipettes (ThermoFisher, Catalog # 13-711-9B) or equivalent
- Sterile deionized or distilled water
- Hanks' BSS or equivalent
- Bovine serum

REAGENT PREPARATION

Prepare 2.5 mL of 1X MagCelect Buffer for each 5×10^7 cells to be processed by mixing 250 μ L of Plus Buffer (10X) with 2.25 mL sterile deionized or distilled water. **The buffer must be kept cold (2-8 °C) for the following procedures.**

CELL PREPARATION

1. Gently tease apart the mouse spleen(s) in order to generate a single cell suspension in Hanks' BSS (or other preferred media) supplemented with 10% bovine serum. To remove cell clumps and/or debris pass the suspended cells through a 40-70 μ m nylon cell strainer.
2. Wash the cells once by filling a 15 or 50 mL centrifuge tube with Hanks' BSS + 10% bovine serum and spinning the cells for 10 minutes at 200 x g (use a 50 mL tube when processing more than 2 spleens).
3. Decant the supernatant, disrupt the cell pellet by "racking" the tube, resuspend the cells in M-Lyse Buffer from R&D Systems' Mouse Erythrocyte Lysing Kit (Catalog # WL2000) that has been diluted to 1X strength with sterile deionized or distilled water and quickly vortex the tube (using 2 mL of 1X M-Lyse Buffer per processed spleen is recommended).
4. Incubate the cells for 10 minutes at room temperature and then fill the tube with 1X Wash Buffer from the Lysing kit.
Note: *The wash buffer must also be diluted with sterile water to 1X strength prior to use.*
5. Spin the cells for 10 minutes at 200 x g and then resuspend the cells in a small volume of cold 1X MagCelect Plus Buffer.
6. Perform a cell count and then adjust the cell concentration to 2×10^8 cells per mL with cold 1X MagCelect Plus Buffer.
7. Continue the cell selection by referring to step # 1 of the cell selection procedure.

CELL SELECTION PROCEDURE

This procedure is for processing 5×10^7 total cells using 5 mL tubes and the MagCelect Magnet. For processing other cell numbers, please refer to the Technical Hints section of this insert. Cells and reagents should be kept cold using an ice bath or a refrigerator. **Reaction incubations must be carried out at 2-8 °C in a refrigerator and not in an ice bath to avoid excessively low temperatures that can slow the kinetics of the optimized reactions.**

1. Prepare a single cell suspension of mouse leukocytes by traditional methods or by following the instructions outlined above in the Cell Preparation section of this insert. Cells must be suspended in **cold** 1X MagCelect Plus Buffer prior to beginning the procedure and be at a cell density of 1×10^8 cells/mL.
2. Transfer 5×10^7 cells (0.5 mL volume) into a 5 mL polystyrene tube and then add 50 μ L of Mouse NK Cell Biotinylated Antibody Cocktail. Gently mix the cell-antibody suspension, avoiding bubble formation, and incubate at 2-8 °C in a refrigerator for 15 minutes.
3. Add 150 μ L of Streptavidin Ferrofluid to the cell suspension, mix gently and incubate at 2-8 °C in a refrigerator for 15 minutes.
4. At the end of the incubation period bring the volume of the reaction in the tube to 2 mL by adding 1.35 mL of 1X MagCelect Plus Buffer. Mix gently to ensure that all reactants in the tube are in suspension.
5. Place the reaction tube in the MagCelect Magnet that has been positioned horizontally to accommodate 5 mL tubes and incubate for 8 minutes at room temperature. Magnetically tagged cells will migrate toward the magnet (these are the unwanted cells), leaving the untouched desired cells in suspension.
6. Recovery of desired cells is achieved as follows: While the tube is in the magnet, using a sterile Pasteur pipette or transfer pipette, **carefully aspirate** all of the reaction suspension and place it in a new 5 mL tube. Remove the tube containing the magnetically trapped cells from the magnet, and discard.
7. To ensure that all of the magnetic nanoparticles have been removed, repeat the magnetic depletion (steps 5 and 6) with the new tube containing the recovered cells. The suspension obtained at the end of these steps is the final depleted cell fraction containing the desired enriched NK Cells. The cells are now ready for counting and further downstream applications.

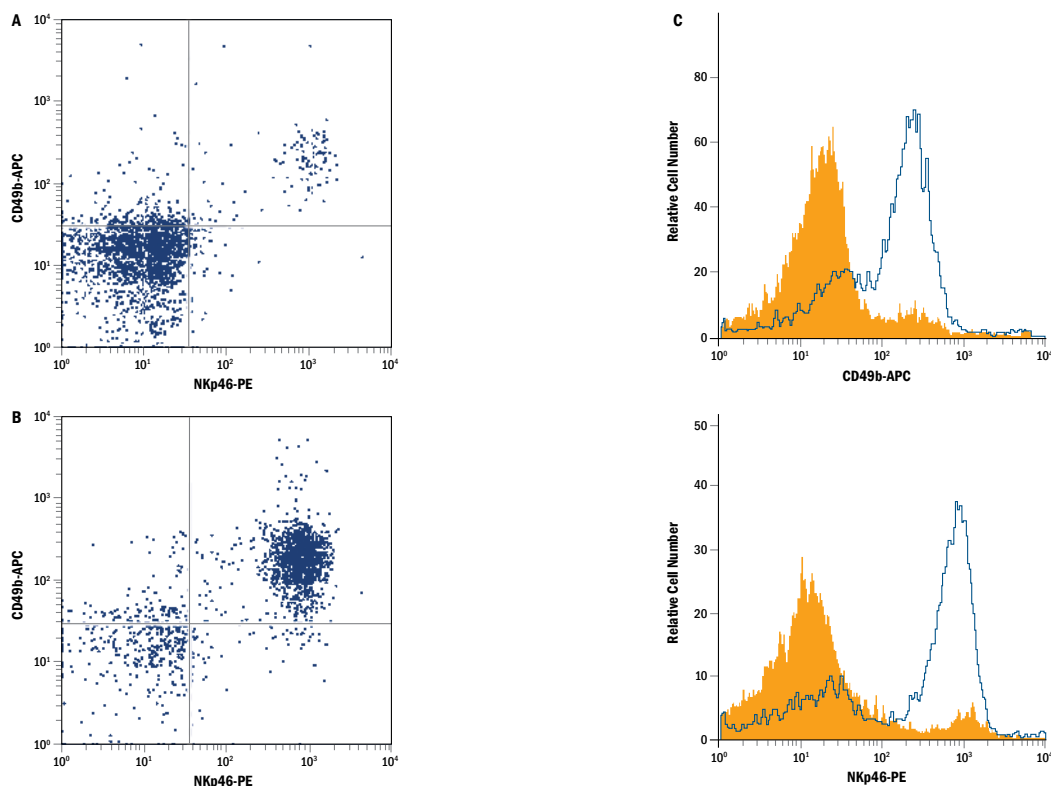
TECHNICAL HINTS

- If sterile cells are required following cell selection, the entire procedure should be carried out in a laminar flow hood to maintain sterile conditions. Use sterile equipment when pipetting reagents that will be reused at a later date.
- Avoid antibody capping on cell surfaces and non-specific cell tagging by working quickly, keeping cells and solutions cold through the use of pre-cooled solutions and by adhering to the incubation times and temperatures specified in the protocol. Increased temperature and prolonged incubation times may lead to non-specific cell labeling thus lowering cell purity and yield.
- Use the following table for recommended quantities to be used in steps 1-3 of the Cell Selection Procedure:

Number of Cells in Starting Preparation	5×10^7	1×10^8
Reaction Volume	0.5 mL	0.5 mL
Mouse NK Cell Biotinylated Antibody Cocktail	50 μ L	100 μ L
Streptavidin Ferrofluid	150 μ L	250 μ L

- When processing 1×10^8 cells or fewer, use the 12 x 75 mm (5 mL) tubes with the MagCollect Magnet horizontally positioned to accommodate up to six 5 mL tubes. **Do not process more than 1×10^8 cells in each 5 mL tube.** A reaction volume of 0.5 mL is recommended for processing up to 1×10^8 cells. A reaction volume of 1 mL is recommended when processing more than 1×10^8 cells.

DATA EXAMPLE



Enrichment of NK cells from mouse Balb/C splenocytes using this MagCollect NK Cell Isolation Kit. (A) Cells before and (B) after enrichment were double-stained with APC-conjugated anti-mouse CD49b and PE-conjugated anti-mouse NKp46 (R&D Systems, Catalog # FAB2225P) to specifically label the NK cell population. (C) A small population with dim staining for CD49b and NKp46 is also enriched. Before selection (filled histogram), after selection (open histogram).