



## **ELISA PRODUCT INFORMATION & MANUAL**

### **Mouse GM-CSF ELISA Kit (Colorimetric) *NBP1-92674***

Enzyme-linked Immunosorbent Assay for quantitative detection. For research use only.

Not for diagnostic or therapeutic procedures.

[www.novusbio.com](http://www.novusbio.com) - P: 303.730.1950 - P: 888.506.6887 - F: 303.730.1966 - [technical@novusbio.com](mailto:technical@novusbio.com)

Novus kits are guaranteed for 6 months from date of receipt

# Mouse GM-CSF ELISA Kit

Enzyme-linked Immunosorbent Assay for quantitative detection of mouse GM-CSF

Catalog Numbers NBP1-92674

**WARNING!** Read the Safety Data Sheets (SDSs) and follow the handling instructions. Wear appropriate protective eyewear, clothing, and gloves. Safety Data Sheets (SDSs) are available from Technical Support.

## Product description

The Mouse GM-CSF ELISA Kit is an enzyme-linked immunosorbent assay for the quantitative detection of mouse GM-CSF.

## Summary

Granulocyte-macrophage colony-stimulating factor (GM-CSF) is a cytokine that has been characterized as a molecule capable of stimulating proliferation and differentiation of granulocyte/macrophage progenitor cells as well as modulating the functional activity of mature granulocytes and macrophages. In combination with erythropoietin, it supports the development of erythroid progenitors in vitro. The biological activities of GM-CSF substantially overlap with the effects of Interleukin 3. The reason for the redundancy of these pleiotropic cytokines may at least in part be explained by their competition for binding to common receptors.

GM-CSF is produced by a number of different cell types such as activated T-cells, B-cells, macrophages, mast cells, endothelial cells, fibroblasts, synoviocytes and various tumor cells in response to various stimuli.

Mouse GM-CSF as well as its receptors have been cloned. The encoded glycoprotein consists of 141 amino acid residues and has a molecular weight of about 23 kDa. The murine protein binds to a high affinity receptor complex consisting of two membrane glycoproteins, the GM-CSF receptor  $\alpha$  subunit with notable homology to the human receptor and the  $\beta$  subunit which also forms part of the receptors for IL-3 and IL-5.

Elevated levels of GM-CSF are found in mice after endotoxin injection.

## Principles of the test

An anti-mouse GM-CSF coating antibody is adsorbed onto microwells.

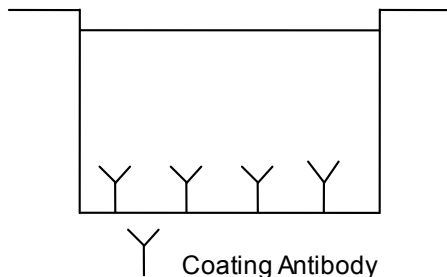


Fig. 1 Coated microwell

Mouse GM-CSF present in the sample or standard binds to antibodies adsorbed to the microwells.

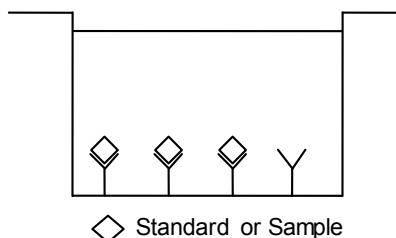


Fig. 2 First incubation

Following incubation unbound biological components are removed during a wash step. A biotin-conjugated anti-mouse GM-CSF antibody is added and binds to mouse GM-CSF captured by the first antibody.

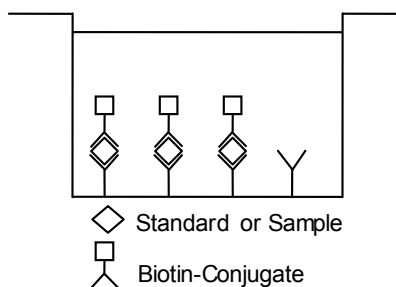


Fig. 3 Second incubation

Following incubation unbound biotin-conjugated anti-mouse GM-CSF antibody is removed during a wash step. Streptavidin-HRP is added and binds to the biotin-conjugated anti-mouse GM-CSF antibody.

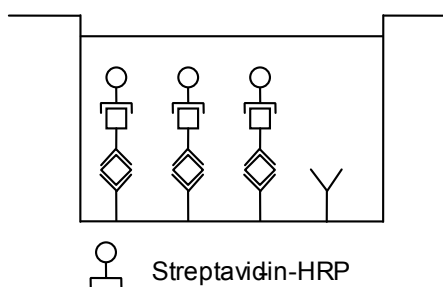


Fig. 4 Third incubation

Following incubation unbound Streptavidin-HRP is removed during a wash step, and substrate solution reactive with HRP is added to the wells.

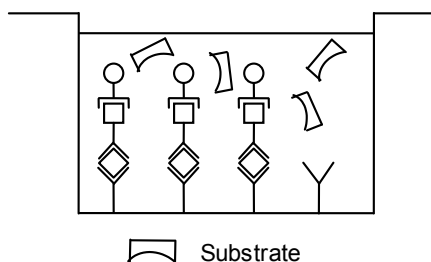


Fig. 5 Fourth incubation

A colored product is formed in proportion to the amount of mouse GM-CSF present in the sample or standard. The reaction is terminated by addition of acid and absorbance is measured at 450 nm. A standard curve is prepared from 7 mouse GM-CSF standard dilutions and mouse GM-CSF sample concentration determined.

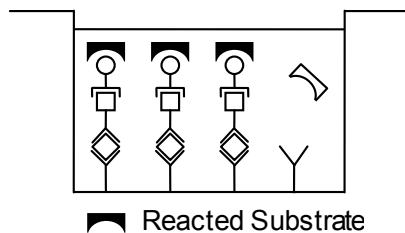


Fig. 6 Stop reaction

## Reagents provided

### Reagents for mouse GM-CSF ELISA NBPI-92674 (96 tests)

1 aluminum pouch with a Microwell Plate (12 strips of 8 wells each) coated with monoclonal antibody to mouse GM-CSF

1 vial (150  $\mu$ L) Biotin-Conjugate anti-mouse GM-CSF monoclonal antibody

1 vial (150  $\mu$ L) Streptavidin-HRP

2 vials mouse GM-CSF Standard lyophilized, 500 pg/mL upon reconstitution

1 vial (12 mL) Sample Diluent

1 vial (5 mL) Assay Buffer Concentrate 20x (PBS with 1% Tween 20, 10% BSA)

1 bottle (50 mL) Wash Buffer Concentrate 20x (PBS with 1% Tween 20)

1 vial (15 mL) Substrate Solution (tetramethyl-benzidine)

1 vial (15 mL) Stop Solution (1M Phosphoric acid)

4 Adhesive Films

### Reagents for mouse GM-CSF ELISA NBPI-92674 (10x96 tests)

10 aluminum pouches with a Microwell Plate (12 strips of 8 wells each) coated with monoclonal antibody to mouse GM-CSF

10 vials (150  $\mu$ L) Biotin-Conjugate anti-mouse GM-CSF monoclonal antibody

10 vials (150  $\mu$ L) Streptavidin-HRP

10 vials mouse GM-CSF Standard lyophilized, 500 pg/mL upon reconstitution

7 vials (12 mL) Sample Diluent

2 vials (5 mL) Assay Buffer Concentrate 20x (PBS with 1% Tween 20, 10% BSA)

6 bottles (50 mL) Wash Buffer Concentrate 20x (PBS with 1% Tween 20)

10 vials (15 mL) Substrate Solution (tetramethyl-benzidine)

1 vial (100 mL) Stop Solution (1M Phosphoric acid)

20 Adhesive Films

## Storage instructions – ELISA kit

Store kit reagents between 2° and 8°C. Immediately after use remaining reagents should be returned to cold storage (2° to 8°C).

Expiry of the kit and reagents is stated on labels.

Expiry of the kit components can only be guaranteed if the components are stored properly, and if, in case of repeated use of one component, this reagent is not contaminated by the first handling.

## Sample collection and storage instructions

Cell culture supernatant and serum were tested with this assay. Other body fluids might be suitable for use in the assay. Remove serum from the clot as soon as possible after clotting.

Samples containing a visible precipitate must be clarified prior to use in the assay. Do not use grossly hemolyzed or lipemic specimens.

Samples should be aliquoted and must be stored frozen at -20°C to avoid loss of bioactive mouse GM-CSF. If samples are to be run within 24 hours, they may be stored at 2° to 8°C (refer to “Sample stability” on page 5).

Avoid repeated freeze-thaw cycles. Prior to assay, the frozen sample should be brought to room temperature slowly and mixed gently.

## Materials required but not provided

- 5 mL and 10 mL graduated pipettes
- 5  $\mu$ L to 1000  $\mu$ L adjustable single channel micropipettes with disposable tips
- 50  $\mu$ L to 300  $\mu$ L adjustable multichannel micropipette with disposable tips
- Multichannel micropipette reservoir
- Beakers, flasks, cylinders necessary for preparation of reagents
- Device for delivery of wash solution (multichannel wash bottle or automatic wash system)
- Microwell strip reader capable of reading at 450 nm (620 nm as optional reference wave length)
- Glass-distilled or deionized water
- Statistical calculator with program to perform regression analysis

## Precautions for use

- All chemicals should be considered as potentially hazardous. We therefore recommend that this product is handled only by those persons who have been trained in laboratory techniques and that it is used in accordance with the principles of good laboratory practice. Wear suitable protective clothing such as laboratory overalls, safety glasses, and gloves. Care should be taken to avoid contact with skin or eyes. In the case of contact with skin or eyes wash immediately with water. See material safety data sheet(s) and/or safety statement(s) for specific advice.
- Reagents are intended for research use only and are not for use in diagnostic or therapeutic procedures.
- Do not mix or substitute reagents with those from other lots or other sources.
- Do not use kit reagents beyond expiration date on label.
- Do not expose kit reagents to strong light during storage or incubation.
- Do not pipet by mouth.
- Do not eat or smoke in areas where kit reagents or samples are handled.
- Avoid contact of skin or mucous membranes with kit reagents or samples.
- Rubber or disposable latex gloves should be worn while handling kit reagents or samples.
- Avoid contact of substrate solution with oxidizing agents and metal.
- Avoid splashing or generation of aerosols.
- To avoid microbial contamination or cross-contamination of reagents or samples that may invalidate the test, use disposable pipette tips and/or pipettes.
- Use clean, dedicated reagent trays for dispensing the conjugate and substrate reagent.
- Exposure to acid inactivates the conjugate.
- Glass-distilled water or deionized water must be used for reagent preparation.
- Substrate solution must be at room temperature prior to use.
- Decontaminate and dispose samples and all potentially contaminated materials as if they could contain infectious agents. The preferred method of decontamination is autoclaving for a minimum of 1 hour at 121.5°C.
- Liquid wastes not containing acid and neutralized waste may be mixed with sodium hypochlorite in volumes such that the final mixture contains 1.0% sodium hypochlorite. Allow 30 minutes for effective decontamination. Liquid waste containing acid must be neutralized prior to the addition of sodium hypochlorite.

## Preparation of reagents

1. Buffer concentrates should be brought to room temperature and should be diluted before starting the test procedure.
2. If crystals have formed in the Buffer Concentrates, warm them gently until they have completely dissolved.

### Wash buffer (1x)

1. Pour entire contents (50 mL) of the Wash Buffer Concentrate (20x) into a clean 1000 mL graduated cylinder. Bring to final volume of 1000 mL with glass-distilled or deionized water.
2. Mix gently to avoid foaming.
3. Transfer to a clean wash bottle and store at 2° to 25°C. Please note that Wash Buffer (1x) is stable for 30 days.
4. Wash Buffer (1x) may also be prepared as needed according to the following table:

| Number of Strips | Wash Buffer Concentrate (20x) (mL) | Distilled Water (mL) |
|------------------|------------------------------------|----------------------|
| 1 - 6            | 25                                 | 475                  |
| 1 - 12           | 50                                 | 950                  |

### Assay buffer (1x)

1. Pour the entire contents (5 mL) of the Assay Buffer Concentrate (20x) into a clean 100 mL graduated cylinder. Bring to final volume of 100 mL with distilled water. Mix gently to avoid foaming.
2. Store at 2° to 8°C. Please note that the Assay Buffer (1x) is stable for 30 days.
3. Assay Buffer (1x) may also be prepared as needed according to the following table:

| Number of Strips | Assay Buffer Concentrate (mL) | Distilled Water (mL) |
|------------------|-------------------------------|----------------------|
| 1 - 6            | 2.5                           | 47.5                 |
| 1 - 12           | 5.0                           | 95.0                 |

### Biotin-Conjugate

**Note:** The Biotin-Conjugate should be used within 30 minutes after dilution.

Make a 1:100 dilution of the concentrated Biotin-Conjugate solution with Assay Buffer (1x) in a clean plastic tube as needed according to the following table:

| Number of Strips | Biotin-Conjugate (mL) | Assay Buffer (1x) (mL) |
|------------------|-----------------------|------------------------|
| 1 - 6            | 0.06                  | 5.94                   |
| 1 - 12           | 0.12                  | 11.88                  |

### Streptavidin-HRP

**Note:** The Streptavidin-HRP should be used within 30 minutes after dilution.

Make a 1:100 dilution of the concentrated Streptavidin-HRP solution with Assay Buffer (1x) in a clean plastic tube as needed according to the following table:

| Number of Strips | Streptavidin-HRP (mL) | Assay Buffer (1x) (mL) |
|------------------|-----------------------|------------------------|
| 1 - 6            | 0.06                  | 5.94                   |
| 1 - 12           | 0.12                  | 11.88                  |

## Mouse GM-CSF standard

1. Reconstitute mouse GM-CSF standard by addition of distilled water. Reconstitution volume is stated on the label of the standard vial. Allow the reconstituted standard to sit for 10-30 minutes. Swirl or mix gently to insure complete and homogeneous solubilization (concentration of reconstituted standard = 500 pg/mL).
2. Mix well prior to making dilutions.
3. After usage remaining standard cannot be stored and has to be discarded.
4. Standard dilutions can be prepared directly on the microwell plate or alternatively in tubes (see "External standard dilution" on page 3).

### External standard dilution

1. Label 7 tubes, one for each standard point: S1, S2, S3, S4, S5, S6, S7.
2. Then prepare 1:2 serial dilutions for the standard curve as follows: Pipette 225 µL of Sample Diluent into each tube.
3. Pipette 225 µL of reconstituted standard (concentration = 500 pg/mL) into the first tube, labeled S1, and mix (concentration of standard 1 = 250 pg/mL).
4. Pipette 225 µL of this dilution into the second tube, labeled S2, and mix thoroughly before the next transfer.
5. Repeat serial dilutions 5 more times thus creating the points of the standard curve (see Figure 7).

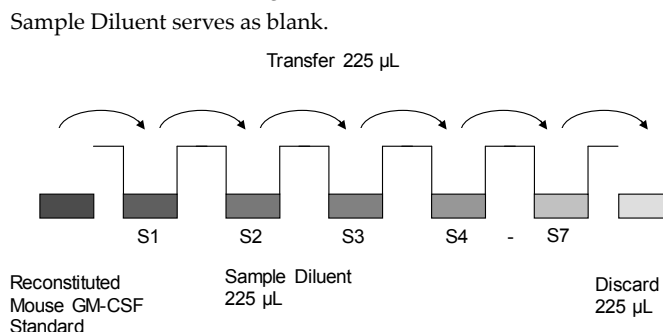


Fig. 7 Dilute standards - tubes

## Test protocol

1. Determine the number of microwell strips required to test the desired number of samples plus appropriate number of wells needed for running blanks and standards. Each sample, standard, blank and optional control sample should be assayed in duplicate. Remove extra microwell strips from holder and store in foil bag with the desiccant provided at 2°-8°C sealed tightly.
2. Wash the microwell strips twice with approximately 400 µL Wash Buffer per well with thorough aspiration of microwell contents between washes. Allow the Wash Buffer to sit in the wells for about 10 – 15 seconds before aspiration. Take care not to scratch the surface of the microwells.

After the last wash step, empty wells and tap microwell strips on absorbent pad or paper towel to remove excess Wash Buffer. Use the microwell strips immediately after washing. Alternatively microwell strips can be placed upside down on a wet absorbent paper for not longer than 15 minutes. Do not allow wells to dry.

3. Standard dilution on the microwell plate (Alternatively the standard dilution can be prepared in tubes - see "External standard dilution" on page 3):

Add 100 µL of Sample Diluent in duplicate to all standard wells. Pipette 100 µL of prepared standard (see "Mouse GM-CSF standard" on page 3, concentration = 500 pg/mL), in duplicate, into well A1 and A2 (see Table 1). Mix the contents of wells A1 and A2 by repeated aspiration and ejection (concentration of standard 1 S1 = 250 pg/mL), and transfer 100 µL to wells B1 and

B2, respectively (see Figure 8). Take care not to scratch the inner surface of the microwells.

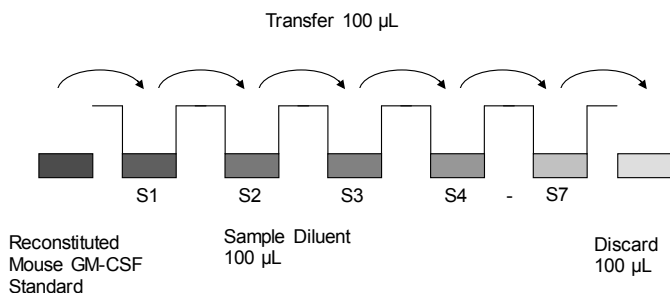


Fig. 8 Dilute standards - microwell plate

**Table 1** Table depicting an example of the arrangement of blanks, standards and samples in the microwell strips:

|   | 1                         | 2                         | 3        | 4        |
|---|---------------------------|---------------------------|----------|----------|
| A | Standard 1<br>250.0 pg/mL | Standard 1<br>250.0 pg/mL | Sample 1 | Sample 1 |
| B | Standard 2<br>125.0 pg/mL | Standard 2<br>125.0 pg/mL | Sample 2 | Sample 2 |
| C | Standard 3<br>62.5 pg/mL  | Standard 3<br>62.5 pg/mL  | Sample 3 | Sample 3 |
| D | Standard 4<br>31.3 pg/mL  | Standard 4<br>31.3 pg/mL  | Sample 4 | Sample 4 |
| E | Standard 5<br>15.6 pg/mL  | Standard 5<br>15.6 pg/mL  | Sample 5 | Sample 5 |
| F | Standard 6<br>7.8 pg/mL   | Standard 6<br>7.8 pg/mL   | Sample 6 | Sample 6 |
| G | Standard 7<br>3.9 pg/mL   | Standard 7<br>3.9 pg/mL   | Sample 7 | Sample 7 |
| H | Blank                     | Blank                     | Sample 8 | Sample 8 |

Continue this procedure 6 times, creating two rows of mouse GM-CSF standard dilutions, ranging from 250.0 to 3.9 pg/mL). Discard 100 µL of the contents from the last microwells (G1, G2) used.

In case of an external standard dilution (see “External standard dilution” on page 3), pipette 100 µL of these standard dilutions (S1 - S7) in the standard wells according to Table 1.

4. Add 100 µL of Sample Diluent in duplicate to the blank wells.
5. Add 50 µL of Sample Diluent to the sample wells.
6. Add 50 µL of each sample in duplicate to the sample wells.
7. Cover with an adhesive film and incubate at room temperature (18 to 25°C) for 2 hours on a microplate shaker.
8. Prepare Biotin-Conjugate (see “Biotin-Conjugate” on page 3).
9. Remove adhesive film and empty wells. Wash microwell strips 4 times according to point 2. of the test protocol. Proceed immediately to the next step.
10. Add 100 µL of Biotin-Conjugate to all wells.
11. Cover with an adhesive film and incubate at room temperature (18 to 25°C) for 1 hours on a microplate shaker.
12. Prepare Streptavidin-HRP (refer to “Streptavidin-HRP” on page 3).
13. Remove adhesive film and empty wells. Wash microwell strips 4 times according to point 2. of the test protocol. Proceed immediately to the next step.
14. Add 100 µL of diluted Streptavidin-HRP to all wells, including the blank wells.
15. Cover with an adhesive film and incubate at room temperature (18° to 25°C) for 30 minutes on a microplate shaker.
16. Remove adhesive film and empty wells. Wash microwell strips 4 times according to point 2. of the test protocol. Proceed immediately to the next step.
17. Pipette 100 µL of TMB Substrate Solution to all wells.

18. Incubate the microwell strips at room temperature (18° to 25°C) for about 10 minutes. Avoid direct exposure to intense light.

The color development on the plate should be monitored and the substrate reaction stopped (see next point of this protocol) before positive wells are no longer properly recordable.

Determination of the ideal time period for color development has to be done individually for each assay.

It is recommended to add the stop solution when the highest standard has developed a dark blue color. Alternatively the color development can be monitored by the ELISA reader at 620 nm. The substrate reaction should be stopped as soon as Standard 1 has reached an OD of 0.9 – 0.95.

19. Stop the enzyme reaction by quickly pipetting 100 µL of Stop Solution into each well. It is important that the Stop Solution is spread quickly and uniformly throughout the microwells to completely inactivate the enzyme. Results must be read immediately after the Stop Solution is added or within one hour if the microwell strips are stored at 2 - 8°C in the dark.
20. Read absorbance of each microwell on a spectro-photometer using 450 nm as the primary wave length (optionally 620 nm as the reference wave length; 610 nm to 650 nm is acceptable). Blank the plate reader according to the manufacturer's instructions by using the blank wells. Determine the absorbance of both the samples and the standards.

**Note:** In case of incubation without shaking the obtained O.D. values may be lower than indicated below. Nevertheless the results are still valid.

## Calculation of results

- Calculate the average absorbance values for each set of duplicate standards and samples. Duplicates should be within 20 percent of the mean value.
- Create a standard curve by plotting the mean absorbance for each standard concentration on the ordinate against the mouse GM-CSF concentration on the abscissa. Draw a best fit curve through the points of the graph (a 5-parameter curve fit is recommended).
- To determine the concentration of circulating mouse GM-CSF for each sample, first find the mean absorbance value on the ordinate and extend a horizontal line to the standard curve. At the point of intersection, extend a vertical line to the abscissa and read the corresponding mouse GM-CSF concentration.
- If instructions in this protocol have been followed, samples have been diluted 1:2 (50 µL sample + 50 µL Sample Diluent) and the concentration read from the standard curve must be multiplied by the dilution factor (x 2).
- Calculation of samples with a concentration exceeding standard 1 may result in incorrect mouse GM-CSF levels. Such samples require further external predilution according to expected mouse GM-CSF values with Sample Diluent in order to precisely quantitate the actual mouse GM-CSF level.
- It is suggested that each testing facility establishes a control sample of known mouse GM-CSF concentration and runs this additional control with each assay. If the values obtained are not within the expected range of the control, the assay results may be invalid.

- A representative standard curve is shown in Figure 9. This curve cannot be used to derive test results. Each laboratory must prepare a standard curve for each group of microwell strips assayed.

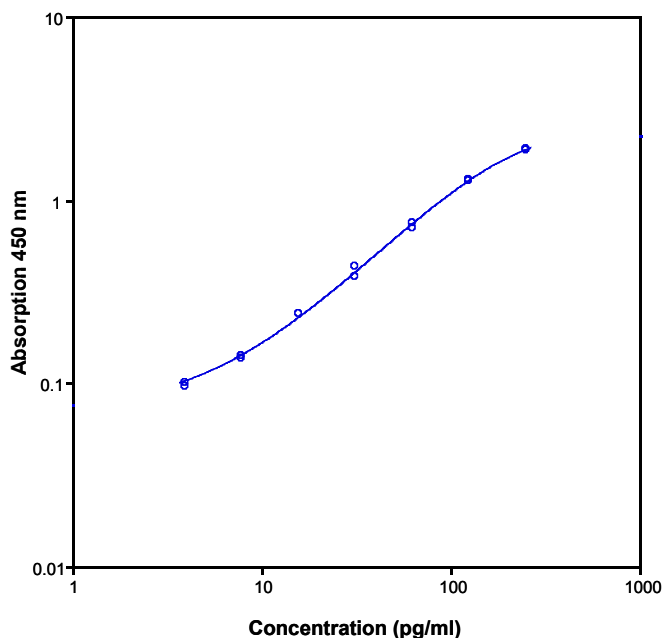


Fig. 9 Representative standard curve for mouse GM-CSF ELISA. Mouse GM-CSF was diluted in serial 2-fold steps in Sample Diluent. Do not use this standard curve to derive test results. A standard curve must be run for each group of microwell strips assayed.

**Table 2** Typical data using the mouse GM-CSF ELISA

Measuring wavelength: 450 nm

Reference wavelength: 620 nm

| Standard | Mouse GM-CSF Concentration (pg/mL) | O.D. at 450 nm | Mean O.D. at 450 nm | C.V. (%) |
|----------|------------------------------------|----------------|---------------------|----------|
| 1        | 250.0                              | 1.857<br>1.875 | 1.866               | 0.5      |
| 2        | 125.0                              | 1.278<br>1.274 | 1.276               | 0.2      |
| 3        | 62.5                               | 0.701<br>0.751 | 0.726               | 3.4      |
| 4        | 31.3                               | 0.429<br>0.383 | 0.406               | 5.7      |
| 5        | 15.6                               | 0.237<br>0.240 | 0.239               | 0.6      |
| 6        | 7.8                                | 0.141<br>0.136 | 0.139               | 1.8      |
| 7        | 3.9                                | 0.100<br>0.096 | 0.098               | 2.0      |
| Blank    | 0.0                                | 0.039<br>0.031 | 0.035               | 16.2     |

The OD values of the standard curve may vary according to the conditions of assay performance (e.g. operator, pipetting technique, washing technique or temperature effects). Furthermore shelf life of the kit may affect enzymatic activity and thus color intensity. Values measured are still valid.

## Limitations

- Since exact conditions may vary from assay to assay, a standard curve must be established for every run.
- Bacterial or fungal contamination of either screen samples or reagents or cross-contamination between reagents may cause erroneous results.

- Disposable pipette tips, flasks or glassware are preferred, reusable glassware must be washed and thoroughly rinsed of all detergents before use.
- Improper or insufficient washing at any stage of the procedure will result in either false positive or false negative results. Empty wells completely before dispensing fresh wash solution, fill with Wash Buffer as indicated for each wash cycle and do not allow wells to sit uncovered or dry for extended periods.

## Performance characteristics

### Sensitivity

The limit of detection of mouse GM-CSF defined as the analyte concentration resulting in an absorbance significantly higher than that of the dilution medium (mean plus 2 standard deviations) was determined to be 2.0 pg/mL (mean of 6 independent assays).

### Reproducibility

#### Intra-assay

Reproducibility within the assay was evaluated in 3 independent experiments. Each assay was carried out with 6 replicates of 8 serum samples containing different concentrations of mouse GM-CSF. 2 standard curves were run on each plate. The calculated overall intra-assay coefficient of variation was < 5%.

#### Inter-assay

Assay to assay reproducibility within one laboratory was evaluated in 3 independent experiments. Each assay was carried out with 6 replicates of 8 serum samples containing different concentrations of mouse GM-CSF. 2 standard curves were run on each plate. The calculated overall inter-assay coefficient of variation was < 10%.

### Spike recovery

The spike recovery was evaluated by spiking 4 levels of mouse GM-CSF into pooled murine serum. Recoveries were determined in 2 independent experiments with 4 replicates each.

The unspiked serum was used as blank in these experiments.

The overall mean recovery was 85%.

### Dilution parallelism

4 serum samples with different levels of mouse GM-CSF were analyzed at serial 2 fold dilutions with 4 replicates each.

The overall mean recovery was 106%.

### Sample stability

#### Freeze-Thaw stability

Aliquots of spiked serum samples were stored at -20°C and thawed 5 times, and the mouse GM-CSF levels determined. There was no significant loss of mouse GM-CSF immunoreactivity detected by freezing and thawing.

#### Storage stability

Aliquots of spiked serum samples were stored at -20°C, 2-8°C, room temperature, and at 37°C, and the mouse GM-CSF level determined after 24 hours. There was no significant loss of mouse GM-CSF immunoreactivity detected during storage under above conditions.

### Specificity

The interference of circulating factors of the immune system was evaluated by spiking these proteins at physiologically relevant concentrations into a mouse GM-CSF positive serum.

There was no crossreactivity detected.

### Expected values

There were no detectable mouse GM-CSF levels found. Elevated mouse GM-CSF levels depend on the type of immunological disorder.

## Reagent preparation summary

### Wash buffer (1x)

Add Wash Buffer Concentrate 20x (50 mL) to 950 mL distilled water.

| Number of Strips | Wash Buffer Concentrate (mL) | Distilled Water (mL) |
|------------------|------------------------------|----------------------|
| 1 - 6            | 25                           | 475                  |
| 1 - 12           | 50                           | 950                  |

### Assay buffer (1x)

Add Assay Buffer Concentrate 20x (5 mL) to 95 mL distilled water.

| Number of Strips | Assay Buffer Concentrate (mL) | Distilled Water (mL) |
|------------------|-------------------------------|----------------------|
| 1 - 6            | 2.5                           | 47.5                 |
| 1 - 12           | 5.0                           | 95.0                 |

### Biotin-Conjugate

Make a 1:100 dilution of Biotin-Conjugate in Assay Buffer (1x):

| Number of Strips | Biotin-Conjugate (mL) | Assay Buffer (1x) (mL) |
|------------------|-----------------------|------------------------|
| 1 - 6            | 0.06                  | 5.94                   |
| 1 - 12           | 0.12                  | 11.88                  |

### Streptavidin-HRP

Make a 1:100 dilution of Streptavidin-HRP in Assay Buffer (1x):

| Number of Strips | Streptavidin-HRP (mL) | Assay Buffer (1x) (mL) |
|------------------|-----------------------|------------------------|
| 1 - 6            | 0.06                  | 5.94                   |
| 1 - 12           | 0.12                  | 11.88                  |

### Mouse GM-CSF standard

Reconstitute lyophilized mouse GM-CSF standard with distilled water. (Reconstitution volume is stated on the label of the standard vial.)

## Test protocol summary

1. Determine the number of microwell strips required.
2. Wash microwell strips twice with Wash Buffer.
3. Standard dilution on the microwell plate: Add 100  $\mu$ L Sample Diluent, in duplicate, to all standard wells. Pipette 100  $\mu$ L prepared standard into the first wells and create standard dilutions by transferring 100  $\mu$ L from well to well. Discard 100  $\mu$ L from the last wells.

Alternatively external standard dilution in tubes (see "External standard dilution" on page 3): Pipette 100  $\mu$ L of these standard dilutions in the microwells strips.

4. Add 100  $\mu$ L Sample Diluent, in duplicate, to the blank wells.
5. Add 50  $\mu$ L Sample Diluent to sample wells.

6. Add 50  $\mu$ L sample in duplicate, to designated sample wells.
7. Cover microwell strips and incubate 2 hours at room temperature (18° to 25°C).
8. Prepare Biotin-Conjugate.
9. Empty and wash microwell strips 4 times with Wash Buffer.
10. Add 100  $\mu$ L Biotin-Conjugate to all wells.
11. Cover microwell strips and incubate 1 hour at room temperature (18° to 25°C).
12. Prepare Streptavidin-HRP.
13. Empty and wash microwell strips 4 times with Wash Buffer.
14. Add 100  $\mu$ L diluted Streptavidin-HRP to all wells.
15. Cover microwell strips and incubate 30 minutes at room temperature (18° to 25°C).
16. Empty and wash microwell strips 4 times with Wash Buffer.
17. Add 100  $\mu$ L of TMB Substrate Solution to all wells.
18. Incubate the microwell strips for about 10 minutes at room temperature (18° to 25°C).
19. Add 100  $\mu$ L Stop Solution to all wells.
20. Blank microwell reader and measure color intensity at 450 nm.

**Note:** If instructions in this protocol have been followed, samples have been diluted 1:2 (50  $\mu$ L sample + 50x  $\mu$ L Sample Diluent) and the concentration read from the standard curve must be multiplied by the dilution factor (x 2).

## Customer and technical support

Visit <https://www.novusbio.com/support> for service and support information.

## Limited product warranty

Novus Biologicals and/or its affiliate(s) warrant their products as set forth in Novus Biologicals' Terms and Conditions.

If you have any questions, please contact Novus Biologicals at <https://www.novusbio.com/support>.