

Human Lineage Marker FITC Antibody Mix (fLMAX)

Catalog Number: NBP2-29444

Contents: 25 tests of human FITC Lineage Markers monoclonal antibody mix

Formulation: Tris buffered saline with 0.05% sodium azide and 0.05% BSA

Storage Conditions: Store at 4°C, do not freeze; product is light-sensitive

Test Size: Novus' human Lineage Marker Antibody Mix contains 25 tests of each antibody, tested and standardized to use at 10 µl, to accommodate multi-color assay formats. Novus also offers service to undertake custom made conjugations with other fluorochromes, upon request.

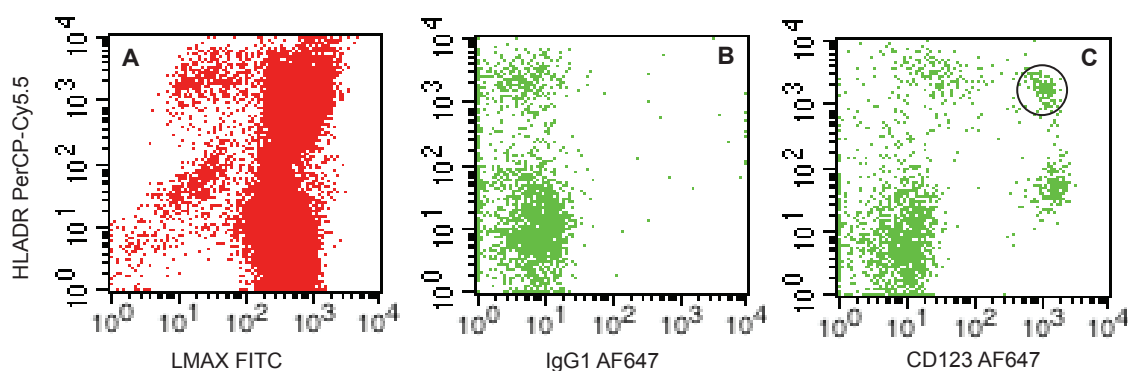
Application Notes

Human LMAX (fLMAX) contains FITC-conjugated antibodies that can be used to identify, enrich and/or deplete T, B, NK, and precursor myeloid cells (such as monocytes). The reagent can be used at 10 µl per one million cells in 100 µl total staining volume (or 100 µl whole blood). Novus' red blood cell lysis buffer (Cat # NBP2-29442) is recommended for lysing RBCs.

Human FITC Lineage Marker monoclonal antibody mix has been validated in flow cytometric analysis of Plasmacytoid Dendritic Cells from:

- whole peripheral blood within 24h of collection
- fresh collected PBMCs
- frozen PBMCs

This kit can also be used for the analysis of Myeloid Dendritic Cells.



3-Color flow assay for identification of Plasmacytoid Dendritic Cells from human PBMC using LMAX FITC, HLADR(L243) PerCP-Cy5.5 and CD123 AF647 (or isotype): A: Lin-HLADR+ B: Isotype C: CD123+ pDC.

fLMAX Components:

Antibody	Fluorochrome	Host	Isotype
CD3	FITC	Mouse	IgG2a
CD14	FITC	Mouse	IgG1
CD16	FITC	Mouse	IgG1
CD19	FITC	Mouse	IgG1
CD20	FITC	Mouse	IgG2b
CD56	FITC	Mouse	IgG1

For Research Use Only