



PRODUCT INFORMATION & MANUAL

Caspase-3 Activity Assay Kit (Colorimetric) *NBP2-54838*

For research use only.
Not for diagnostic or therapeutic procedures.

www.novusbio.com - P: 303.730.1950 - P: 888.506.6887 - F: 303.730.1966 - technical@novusbio.com

Novus kits are guaranteed for 6 months from date of receipt

Caspase-3/CPP32 Colorimetric Assay Kit

(Catalog #NBP2-54838; Store kit at –20 C)

I. Introduction:

Activation of ICE-family proteases/caspases initiates apoptosis in mammalian cells. The **Caspase-3/CPP32 Colorimetric Assay Kit** provides a simple and convenient means for assaying the activity of caspases that recognize the sequence DEVD. The assay is based on spectrophotometric detection of the chromophore *p*-nitroaniline (*p*NA) after cleavage from the labeled substrate DEVD-*p*NA. The *p*NA light emission can be quantified using a spectrophotometer or a microtiter plate reader at 400- or 405-nm. Comparison of the absorbance of *p*NA from an apoptotic sample with an uninduced control allows determination of the fold increase in CPP32 activity.

II. Kit Contents:

Components	K106-25	K106-100	K106-200	K106-400	Part Number
	25 assays	100 assays	200 assays	400 assays	
Cell Lysis Buffer	25 ml	100 ml	100 ml	100 ml	K106-XX(X)-1
2X Reaction Buffer	2 ml	4 x 2 ml	16 ml	32 ml	K106-XX(X)-2
DEVD- <i>p</i> NA (4 mM)	125 µl	0.5 ml	2 x 0.5 ml	2 x 1 ml	K106-XX(X)-3
DTT (1 M)	100 µl	0.4 ml	0.4 ml	0.4 ml	K106-XX(X)-4
Dilution Buffer	25 ml	100 ml	200 ml	400 ml	K106-XX(X)-5

III. Caspase-3 Assay Protocol:

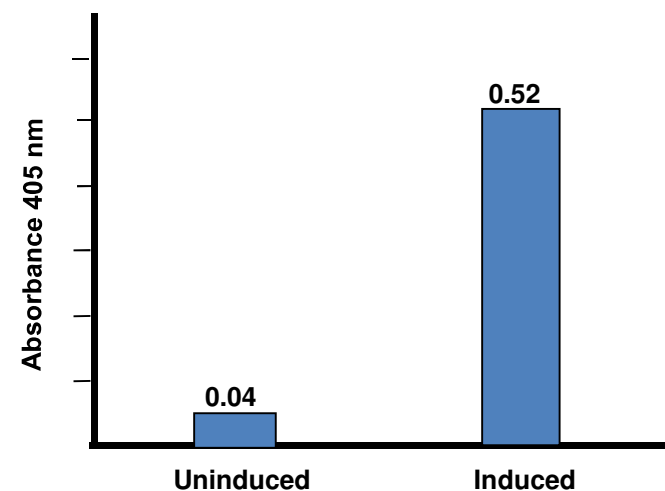
A. General Considerations

- Aliquot enough 2X Reaction Buffer for the number of assays to be performed. Add DTT to the 2X Reaction Buffer immediately before use (10 mM final concentration: add 10 µl of 1.0 M DTT stock per 1 ml of 2X Reaction Buffer).
- Protect DEVD-*p*NA from light.

B. Assay Procedure

- Induce apoptosis in cells by desired method. Concurrently incubate a control culture *without* induction.
- Count cells and pellet 1-5 x 10⁶ cells.
- Resuspend cells in 50 µl of chilled Cell Lysis Buffer and incubate cells on ice for 10 minutes.
- Centrifuge for 1 min in a microcentrifuge (10,000 x g).
- Transfer supernatant (cytosolic extract) to a fresh tube and put on ice for immediate assay or aliquot and store at –80°C for future use.
- Assay protein concentration.
- Dilute 50-200 µg protein to 50 µl Cell Lysis Buffer for each assay.
- Add 50 µl of 2X Reaction Buffer (containing 10 mM DTT) to each sample.
- Add 5 µl of the 4 mM DEVD-*p*NA substrate (200 µM final conc.) and incubate at 37°C for 1-2 hour.
- Read samples at 400- or 405-nm in a microtiter plate reader, or spectrophotometer using a 100- l micro quartz cuvette (Sigma), or dilute sample to 1 ml with Dilution Buffer and using regular cuvette (note: Dilution of the samples proportionally decreases the reading). Fold-increase in CPP32 activity can be determined by comparing these results with the level of the uninduced control.

Note: Background reading from cell lysates and buffers should be subtracted from the readings of both induced and the uninduced samples before calculating fold increase in CPP32 activity



Induction of Caspase-3 Activity by Anti-Fas Antibody in Jurkat – T Cells Using Caspase-3 Colorimetric Assay Kit NBP2-54838

IV. Storage and Stability:

Store kit at –20 C (Store Lysis Buffer, Reaction Buffer, and Dilution Buffer at 4 C after opening). All reagents are stable for at least 6 months under proper storage conditions.

GENERAL TROUBLESHOOTING GUIDE FOR CASPASE COLORIMETRIC AND FLUOROMETRIC KITS:

Problems	Cause	Solution
Assay not working	<ul style="list-style-type: none"> • Cells did not lyse completely • Experiment was not performed at optimal time after apoptosis induction • Plate read at incorrect wavelength • Old DTT used 	<ul style="list-style-type: none"> • Resuspend the cell pellet in the lysis buffer and incubate as described in the datasheet • Perform a time-course induction experiment for apoptosis • Check the wavelength listed in the datasheet and the filter settings of the instrument • Always use freshly thawed DTT in the cell lysis buffer
High Background	<ul style="list-style-type: none"> • Increased amount of cell lysate used • Increased amounts of components added due to incorrect pipetting • Incubation of cell samples for extended periods • Use of expired kit or improperly stored reagents • Contaminated cells 	<ul style="list-style-type: none"> • Refer to datasheet and use the suggested cell number to prepare lysates • Use calibrated pipettes • Refer to datasheet and incubate for exact times • Always check the expiry date and store the individual components appropriately • Check for bacteria/ yeast/ mycoplasma contamination
Lower signal levels	<ul style="list-style-type: none"> • Cells did not initiate apoptosis / assay not done at optimal timepoint after induction of apoptosis • Very few cells used for analysis • Use of samples stored for a long time • Incorrect setting of the equipment used to read samples • Allowing the reagents to sit for extended times on ice 	<ul style="list-style-type: none"> • Determine the time-point for initiation of apoptosis after induction (time-course experiment) • Refer to datasheet for appropriate cells number • Use fresh samples or aliquot and store and use within one month for the assay • Refer to datasheet and use the recommended filter setting • Always thaw and prepare fresh reaction mix before use
Samples with erratic readings	<ul style="list-style-type: none"> • Uneven number of cells seeded in the wells • Samples prepared in a different buffer • Adherent cells dislodged and lost at the time of experiment • Cell/ tissue samples were not completely homogenized • Samples used after multiple freeze-thaw cycles • Presence of interfering substance in the sample • Use of old or inappropriately stored samples 	<ul style="list-style-type: none"> • Seed only equal number of uniformly suspended healthy cells (correct passage number) • Use the cell lysis buffer provided in the kit • Perform experiment gently and in duplicates/triplicates; apoptotic cells may become floaters • Use Dounce homogenizer (increase the number of strokes); observe efficiency of lysis under microscope • Aliquot and freeze samples, if needed to use multiple times • Trouble-shoot as needed • Use fresh samples or store at correct temperatures until use
Unanticipated results	<ul style="list-style-type: none"> • Measured at incorrect wavelength • Cell samples contain interfering substances 	<ul style="list-style-type: none"> • Check the equipment and the filter setting • Trouble shoot if it interferes with the kit (run proper controls)
General issues	<ul style="list-style-type: none"> • Improperly thawed components • Incorrect incubation times or temperatures • Incorrect volumes used • Air bubbles formed in the well/tube • Substituting reagents from older kits/ lots • Use of a different 96-well plate 	<ul style="list-style-type: none"> • Thaw all components completely and mix gently before use • Refer to datasheet & verify the correct incubation times and temperatures • Use calibrated pipettes and aliquot correctly • Pipette gently against the wall of the well/tubes or spin down the plate • Use fresh components from the same kit • Fluorescence: Black plates; Absorbance: Clear plates

Note# The most probable cause is listed under each section. Causes may overlap with other sections.