



ELISA PRODUCT INFORMATION & MANUAL

Human IFN-alpha G/IFNA5 ELISA Kit (Colorimetric)

NBP2-80347

Enzyme-linked Immunosorbent Assay for quantitative
detection. For research use only.

Not for diagnostic or therapeutic procedures.

www.novusbio.com - P: 303.730.1950 - P: 888.506.6887 - F: 303.730.1966 - technical@novusbio.com

Novus kits are guaranteed for 6 months from date of receipt

BACKGROUND.....	1
INTENDED USE	1
PRINCIPLE OF THE ASSAY.....	2
MATERIALS PROVIDED.....	3
STORAGE.....	4
OTHER SUPPLIES REQUIRED	5
PRECAUTIONS.....	6
SAFETY INSTRUCTIONS	6
TECHNICAL TIPS.....	6
TYPICAL DATA	11
PRECISION	12
RECOVERY.....	12
LINEARITY	12
SENSITIVITY.....	13
CALIBRATION.....	13
SAMPLE VALUES	14
SPECIFICITY	14
TROUBLE SHOOTING.....	15
ASSAY SUMMARY	16

BACKGROUND

Interferon, alpha 5 (IFNA5) belongs to the alpha/beta interferon family. IFNA5 is the only IFNA subtype detected in normal liver, while a mixture of subtypes is observed in the liver tissue of patients with chronic hepatitis C. Interferons are produced by macrophages, IFN-alpha have antiviral activities. Interferon stimulates the production of two enzymes: a protein kinase and an oligoadenylate synthetase. IFN-alpha, the first cytokine to be produced by recombinant DNA technology, has emerged as an important regulator of growth and differentiation, affecting cellular communication and signal transduction pathways as well as immunological control. Originally discovered as an antiviral substance, the efficacy of IFN-alpha in malignant, viral, immunological, angiogenic, inflammatory, and fibrotic diseases suggests a spectrum of interrelated pathophysiologies. IFN-alpha emerged as a prototypic tumor suppressor protein that represses the clinical tumorigenic phenotype in some malignancies capable of differentiation.

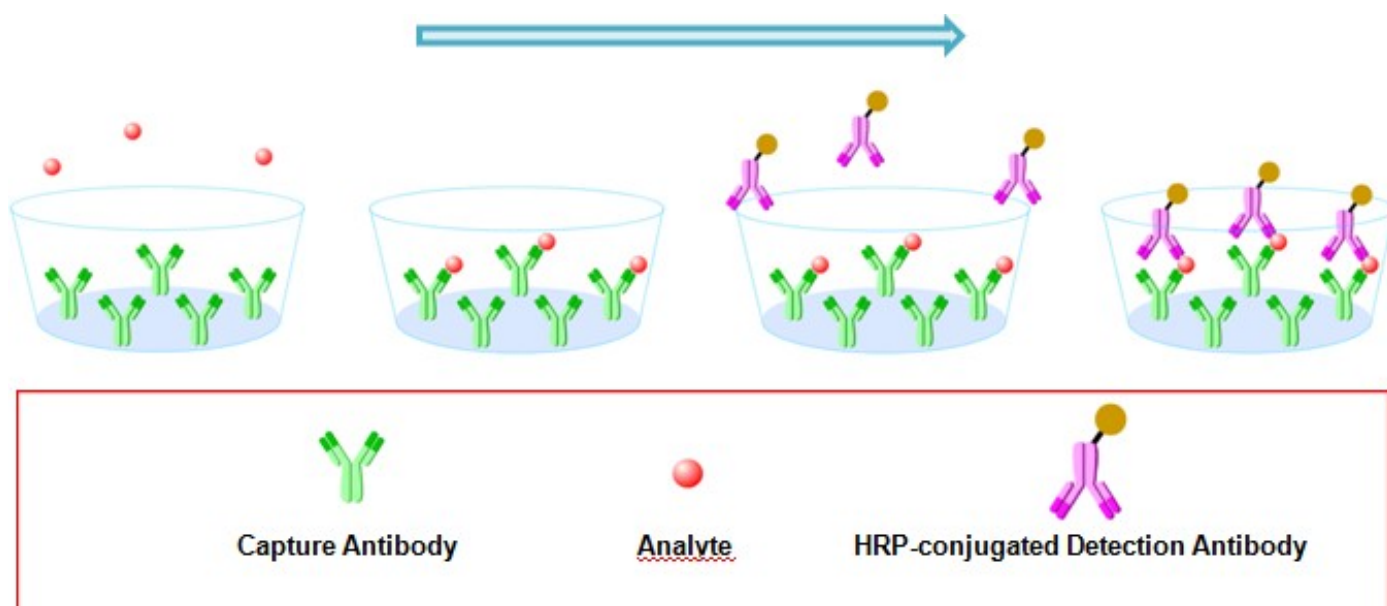
INTENDED USE

For the quantitative determination of Human IFN-alpha G/IFNA5 concentration in serum.

The use of this kit for other sample types need be validated by the end user due to the complexity of natural targets and unpredictable interference.

PRINCIPLE OF THE ASSAY

The principle of this ELISA kit is based on the solid phase sandwich enzyme immunoassay technique. A monoclonal antibody specific for Human IFN-alpha G/IFNA5 has been pre-coated onto well plate strips. Standards and samples are added to the wells and Human IFN-alpha G/IFNA5 present in the sample is bound by the immobilized antibody. After incubation the wells are washed and a horseradish peroxidase conjugated anti-Human IFN-alpha G/IFNA5 antibody is added, producing an antibody-antigen-antibody "sandwich complex". Following a wash to remove any unbound antibody a TMB substrate solution is loaded and color develops in proportion to the amount of Human IFN-alpha G/IFNA5 bound. The reaction is stopped by the addition of a stop solution and the intensity of the color can be measured at 450 nm (See schematics below).



MATERIALS PROVIDED

Human IFN-alpha G/IFNA5 Microplate - 96 well polystyrene microplate (12 strips of 8 wells) coated with rabbit mAb antibody against Human IFN-alpha G/IFNA5 .

Human IFN-alpha G/IFNA5 Detecion Antibody - 0.2 mg/mL of rabbit pAb antibody against Human IFN-alpha G/IFNA5 conjugated to horseradish peroxidase (HRP) with preservatives.

Human IFN-alpha G/IFNA5 Standard -Recombinant Human IFN-alpha G/IFNA5 in a buffer with preservatives, lyophilized. The amount of standard is lot specific and indicated on the label of standard vial.

Wash Buffer Concentrate -25 mL of a 20-fold concentrated solution of buffered surfactant with preservatives.

Dilution Buffer Concentrate -8 mL of a 20-fold concentrated dilution buffer with preservatives.

Fetal bovine serum-2 mL offetal bovine serum which is used for preparing sample dilution buffer.

Color Reagent A - 13 mL of stabilized hydrogen peroxide.

Color Reagent B - 13 mL of stabilized chromogen (tetramethylbenzidine).

Stop Solution - 8 mL of 2 N sulfuric acid.

STORAGE

Unopened Kit	Store at 2 - 8°C and the kit is stable for 6 months upon receipt.	
Opened/ Reconstituted Reagents	Diluted Wash Buffer	Stored for up to 1 week at 2 - 8°C
	Diluted Dilution Buffer	
	Sample Dilution Buffer	
	Conjugate	Stored for up to 1 month at 2 - 8°C
	Stop Solution	
	Unmixed Color Reagent A	
	Unmixed Color Reagent B	
	Standard	After reconstitution, store for up to 1 month at -80°C. The reconstituted standards should be aliquoted and avoid repeated freeze-thaw cycles.
	Microplate Wells	Return unused strips to the foil pouch containing the desiccant pack and reseal along entire edge of zip-seal. Stored for up to 1 month at 2 - 8°C

OTHER SUPPLIES REQUIRED

- Microplate reader capable of measuring absorbance at 450 nm
- Pipettes and pipette tips
- Deionized or distilled water
- Multi -channel pipette, squirt bottle, manifold dispenser, or automated microplate washer
- 500 mL graduated cylinder
- Tubes for standard dilution
- Well plate cover or seals

PRECAUTIONS

1. This kit is **for research use only** and is not for use in diagnostic or therapeutic procedures.
2. The kit should not be used beyond the expiration date.
3. Do not mix reagents from different lots.
4. The kit is designed and tested to detect the specific targets and samples shown in the manual. The use of this kit for other purpose should be verified carefully by the end user.

SAFETY INSTRUCTIONS

5. The Stop Solution provided with this kit is an acid solution. Take care when using the reagent to avoid the risk.
6. All biological materials should be handled and discarded as potentially hazardous following local laws and regulations.
7. Personal protective equipments such as lab coats, gloves, surgical masks and goggles are necessary in experiments for safety reasons.

TECHINICAL TIPS

8. Bring all reagents and samples to room temperature before use.
9. Samples should be thawed completely and mixed well prior to analysis. Avoid repeated freeze-thaw cycles of frozen samples.
10. A standard curve should be generated for each set of sample assayed. **DO NOT USE** the standard curves from other plates or other days.
11. Use a new disposable reagent reservoir and new disposable pipette tips for each transfer to avoid cross-contamination.
12. Read the absorbance of each well within 20 minutes after adding the stop solution.

SAMPLE COLLECTION AND STORAGE

Serum - Use a serum separator tube and allow samples to clot for 30 minutes before centrifugation for 15 minutes at 1000 x g. Remove serum and assay immediately or aliquot and store samples at -20°C or lower temperature. **Avoid repeated freeze -thaw cycles.**

Note:

The sample should be diluted to within the working range of the assay in 1 × Sample Dilution Buffer.. The exact dilution must be determined based on the concentration of specific target in individual samples.

REAGENT PREPARATION

Bring all reagents to room temperature before use.If crystals have formed in buffer solution, warm to room temperature and mix gently until the crystals have completely dissolved.

Wash Buffer - Prepare 1× wash buffer by adding 20 mL of Wash Buffer Concentrate to deionized or distilled water to prepare 400 mL of Wash Buffer.

Dilution Buffer - Prepare 1× dilution buffer by adding 5 mL of Dilution Buffer Concentrate to deionized or distilled water to prepare 100 mL of Dilution Buffer.

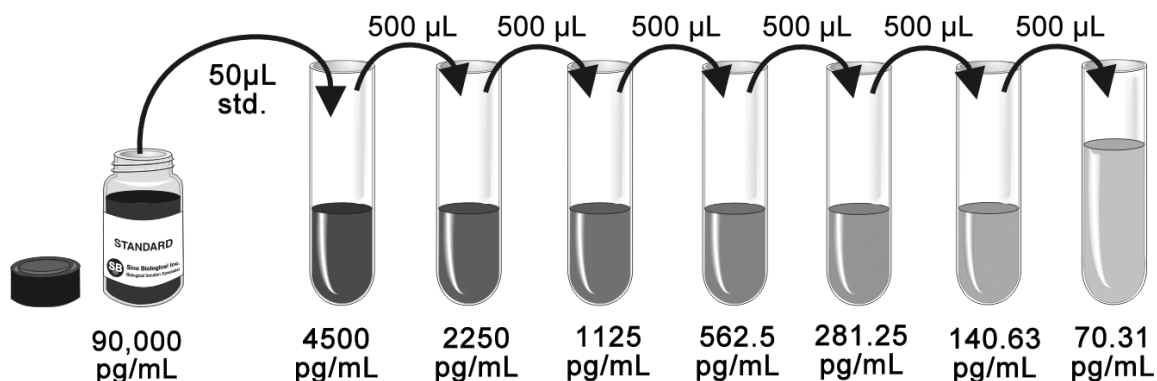
Sample Dilution Buffer - Prepare 1×sample dilution buffer by adding 1.5 mL of fetal bovineserum to 1×wash buffer to prepare 15mLofSample DilutionBuffer.

Detection Antibody - Centrifuge at 10,000 x g for 20 seconds. Dilute to **work concentration** of 0.7 µg/mL in Dilution Buffer before use.

Substrate Solution - Color Reagents A and B should be mixed together in equal volumes within 15 minutes of use. Protect from light. 200 µL of the resultant mixture is required per well. **Take care not to contaminate the Color Reagent. If the mixed color reagent is blue. DO NOT USE.**

Human IFN-alpha G/IFNA5 Standard - Reconstitute the Human IFN-alpha G/IFNA5 Standard with 1 mL of Dilution Buffer to make stock solution. Shake the vial gently until the lyophilized powder totally dissolved (**Do not turn the vial upside down**). Mix the standard to ensure complete reconstitution prior to making dilutions. Prepare serially diluted standards as described in the following step: Pipette 1000 μL of Sample Dilution Buffer into the 4500 pg/mL tube. Pipette 500 μL of Sample Dilution Buffer into the remaining tubes. Use the stock solution to produce a dilution series as the following figure. Mix each tube thoroughly before the next transfer. The 4500 pg/mL standard serves as the high standard. The Sample Dilution Buffer serves as the zero standard (0 pg/mL). **Ensures each assay has a standard curve. DO NOT USE the standard curve on other plates or other days.**

The following graph is only for demonstration purposes. The concentration of stock solution is lot specific and need be calculated with the actual amount of standard labeled on the standard vial.



ASSAY PROCEDURE

Bring all reagents and samples to room temperature before use. It is recommended that all samples and standards be assayed in duplicate.

1. Prepare all reagents, working standards, and samples as directed in the previous sections.
2. Remove unused microplate strips from the plate frame, return them to the foil pouch containing the desiccant pack, and reseal.
3. Wash each well three times with Wash Buffer (300 μL /well) using a squirt bottle, multi-channel pipette, manifold dispenser or autowasher. **Complete removal of liquid at each step is essential to good performance. Remove any remaining Wash Buffer by aspirating or decanting. Invert the plate and blot it against clean paper towels.**
4. Add 50 μL of each serially diluted protein standard or test sample per well including a zero standard. Then add 150 μL of 1 \times Dilution Buffer per well. Mix by gently tapping the plate. **Ensure reagent addition is uninterrupted and completed within 15 minutes.** Cover/seal the plate and incubate for 2 hours at room temperature.
5. Repeat the aspiration/wash as in Step 3.
6. Add 200 μL of Detection Antibody in working concentration to each well. Cover/seal the plate and incubate for 2 hour at room temperature.
7. Repeat the aspiration/wash as in Step 3.
8. Add 200 μL of Substrate Solution to each well. Incubate for 20 minutes at room temperature. **Protect from light.**
9. Add 50 μL of Stop Solution to each well. If color change does not appear uniform, gently tap the plate to ensure thorough mixing.
10. **Determine the optical density of each well within 20 minutes**, using a microplate reader set to 450 nm.

CALCULATION OF RESULTS

If samples generate values higher than the highest standard, dilute the samples and repeat the assay.

Calculate the mean absorbance for each standard, control and sample and subtract average zero standard optical density (O.D.) .

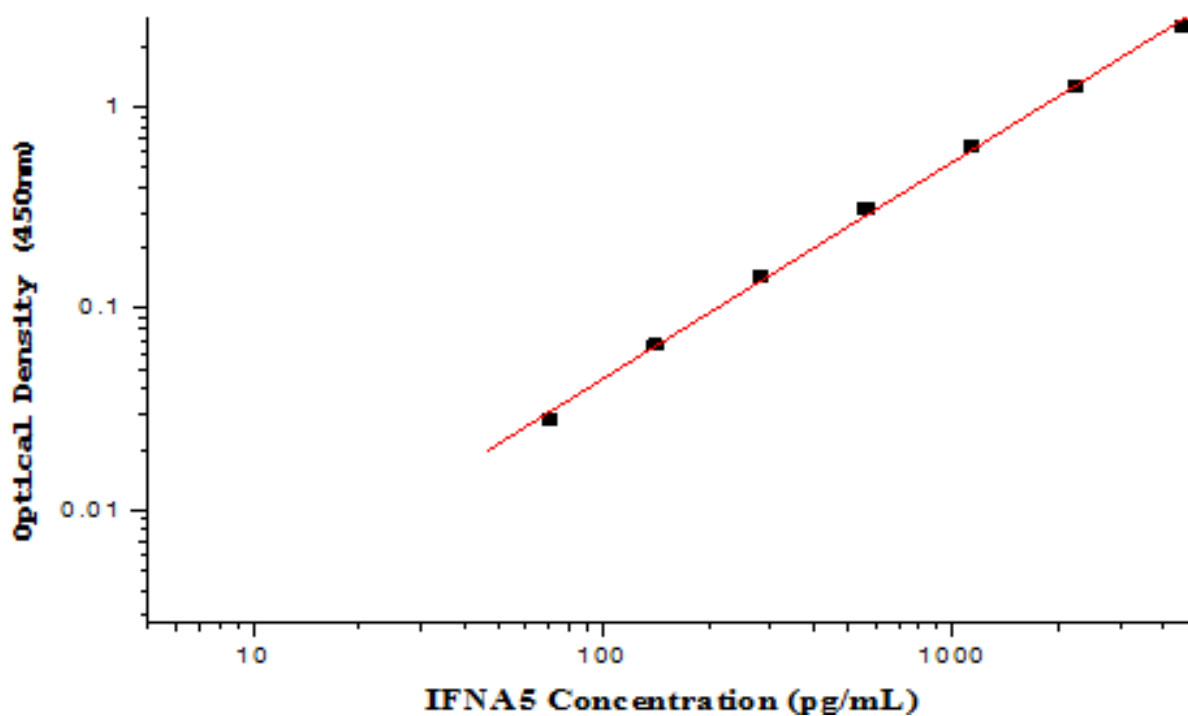
Construct a standard curve by plotting the mean absorbance for each standard on the y-axis against the concentration on the x-axis and draw a best fit curve through the points on the graph. Most graphing software can help make the curve and a four parameter logistic (4-PL) usually provide the best fit, though other equations (e.g. linear, log/log) can also be tried to see which provides the most accurate.

Extrapolate the target protein concentrations for unknown samples from the standard curve plotted.

TYPICAL DATA

This standard curve is only for demonstration purposes. A standard curve should be generated for each assay.

0	0
70.31	0.028
140.63	0.066
281.25	0.145
562.5	0.312
1125	0.633
2250	1.282
4500	2.500



PRECISION

Intra-assay Precision (Precision within an assay)

Three samples of known concentration were tested twenty times on one plate to assess intra-assay precision.

Inter-assay Precision (Precision between assays)

Three samples of known concentration were tested in five separate assays to assess inter-assay precision.

Sample	Intra -assay Precision			Inter -assay Precision		
	1	2	3	1	2	3
N	20	20	20	3	3	3
Mean (pg/mL)	307	718	1532	351	762	1595
SD	23	38.9	58.51	39.53	38.08	54.62
CV (%)	7.5%	5.4%	3.8%	11.3%	5.0%	3.4%

RECOVERY

The recovery of Human IFN-alpha G/IFNA5 spiked to different levels throughout the range of the assay in related matrices was evaluated.

Sample	Average % Recovery	Range
Serum (n=3)	90	87-95%

LINEARITY

		Serum
1:2	recovery of detected	105%
1:4	recovery of detected	99%
1:8	recovery of detected	96%
1:16	recovery of detected	81%

SENSITIVITY

The minimum detectable dose (MDD) of Human IFN-alpha G/IFNA5 is typically less than 60.7 pg/mL. The MDD was determined by adding three standard deviations to the mean optical density value of twenty zero standard replicates and calculating the corresponding concentration.

CALIBRATION

This immunoassay is calibrated against a highly purified HEK 293-expressed recombinant Human IFN-alpha G/IFNA5 .

SAMPLE VALUES

The average concentration of Human IFNA5 in 10 normal human serum is 0.99 +/-0.80 ng/mL ranging from ND to 2.17 ng/mL.

SPECIFICITY

This assay recognizes both recombinant and natural Human IFNA5. The factors listed below were prepared at 50 ng/mL in dilution buffer and assayed for cross-reactivity. No cross-reactivity was observed.

Recombinant human			
IL-1	IL-2	IL-33	IL-10
IL8	TNF- α	IL-4	IL-6
IFN- γ	MIP-1 β	TIMP-1	TIMP-2
GM-CSF	SCF	PDGF	VEGF
PPICZa-IFNA2	IFNA4	IFNA8	IFNA1
Recombinant mouse			
IFNA5			
Recombinant rat			
IFNA5			

Preparations of the factors listed below at 50 ng/mL in a mid-range recombinant human IFNA5 control were assayed for interference. No significant interference was observed.

Recombinant human			
IL-1	IL-2	IL-33	IL-10
IL8	TNF- α	IL-4	IL-6
IFN- γ	MIP-1 β	TIMP-1	TIMP-2
GM-CSF	SCF	PDGF	VEGF
PPICZa-IFNA2	IFNA4	IFNA8	IFNA1
Recombinant mouse			
IFNA5			
Recombinant rat			
IFNA5			

TROUBLE SHOOTING

Problems	Possible Sources	Solutions
No signal	Incorrect or no Detection Antibody was added	Add appropriate Detection Antibody and continue
	Substrate solution was not added	Add substrate solution and continue
	Incorrect storage condition	Check if the kit is stored at recommended condition and used before expiration date
Poor Standard Curve	Standard was incompletely reconstituted or was inappropriately stored	Aliquot reconstituted standard and store at -80°C . The reconstituted standards should be aliquoted and avoid repeated freeze-thaw cycles.
	Imprecise / inaccurate pipetting	Check / calibrate pipettes
	Incubations done at inappropriate temperature, timing or agitation	Follow the general ELISA protocol
	Background wells were contaminated	Avoid cross contamination by using the sealer appropriately
Poor detection value	The concentration of antigen in samples was too low	Enriching samples to increase the concentration of antigen
	Samples were ineffective	Check if the samples are stored at cold environment. Detect samples in timely manner
High Background	Insufficient washes	Use multichannel pipettes without touching the reagents on the plate
		Increase cycles of washes and soaking time between washes
	Color Reagent should be clear and colorless prior to addition to wells	Color Reagent should be clear and colorless prior to addition to wells
	Use clean tubes and pipettes tips	Use clean plates, tubes and pipettes tips
Non-specificity	Samples were contaminated	Avoid cross contamination of samples
	The concentration of samples was too high	Try higher dilution rate of samples

ASSAY SUMMARY

