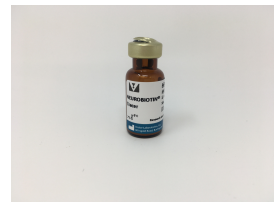
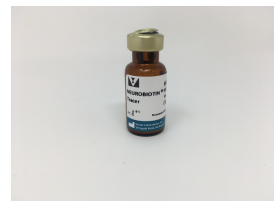
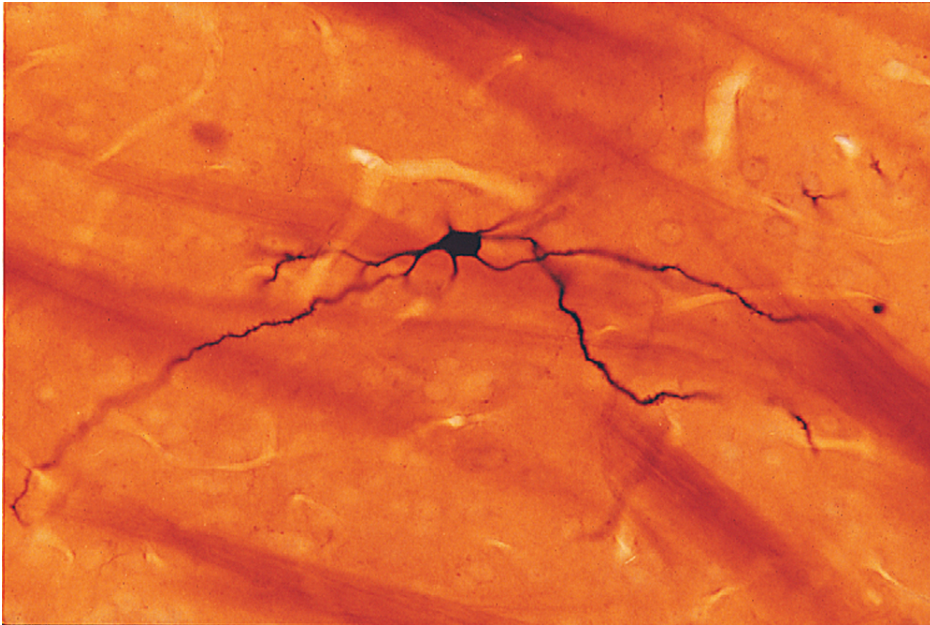




NEUROBIOTIN® Tracer

Product Images



Short Description

NEUROBIOTIN Tracer (SP-1120) is an amino derivative of biotin that can be used as an intracellular label for cells, particularly neurons. It is used for visualizing neural architecture and for the identification of gap junction coupling.

Features:

- Can be used in many types of preparations including in vivo, whole mounts, slice preparations, or cultured cells
- Can be delivered by many routes such as intracellular electrodes, microinjection, cut-loading, or scrape-loading
- Can be detected using avidin or streptavidin systems with either chromogenic or fluorescence visualization methods

Advantages over biocytin and other neuronal labels:

- Better solubility
- More efficiently iontophoresed
- Remains in cell longer
- Non-toxic
- Can be fixed with formalin or glutaraldehyde

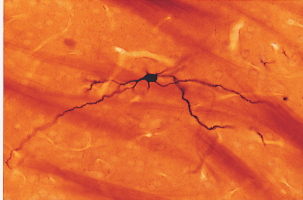
Additional Information

Unit Size	20 mg, 50 mg
Chemical Formula	C ₁₂ H ₂₃ ClN ₄ O ₂ S
Recommended Storage	2-8 °C (desiccated). Once in solution, store frozen.
Molecular Weight	322.8
Neuronal Tracer - Direction of Transport	Anterograde/Retrograde
Detection Method	Avidin(Streptavidin)/Biotin Method, Chromogenic, Fluorescence

NEUROBIOTIN® Tracer

Features:

- An amino derivative of biotin that can be used as an intracellular label for cells, particularly neurons
- Used for visualizing neural architecture and for the identification of gap junction coupling
- Can be used in many types of preparations including in vivo, whole mounts, slice preparations, or cultured cells
- Can be delivered by many routes such as intracellular electrodes, microinjection, cut-loading, or scrape-loading
- Can be detected using avidin or streptavidin systems with either chromogenic or fluorescence visualization methods



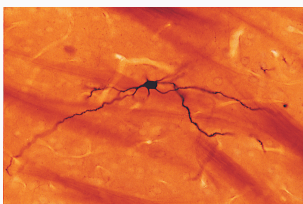
Advantages over biocytin and other neuronal labels:

- Better solubility
- More efficiently iontophoresed
- Remains in cell longer
- Non-toxic
- Can be fixed with formalin or glutaraldehyde

NEUROBIOTIN® Tracer

Features:

- An amino derivative of biotin that can be used as an intracellular label for cells, particularly neurons
- Used for visualizing neural architecture and for the identification of gap junction coupling
- Can be used in many types of preparations including in vivo, whole mounts, slice preparations, or cultured cells
- Can be delivered by many routes such as intracellular electrodes, microinjection, cut-loading, or scrape-loading
- Can be detected using avidin or streptavidin systems with either chromogenic or fluorescence visualization methods



Advantages over biocytin and other neuronal labels:

- Better solubility
- More efficiently iontophoresed
- Remains in cell longer
- Non-toxic
- Can be fixed with formalin or glutaraldehyde

